

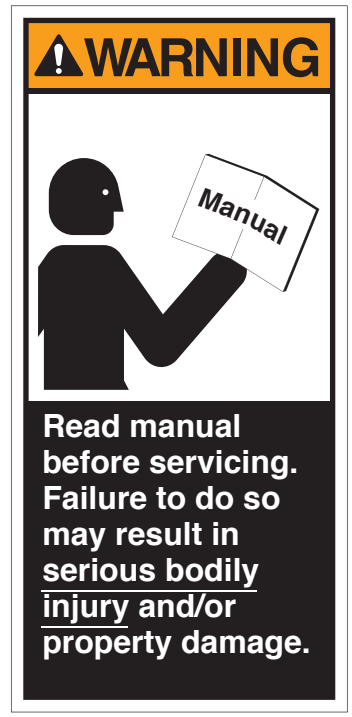
# Maintenance and Service Manual

## Wheelchair-Accessible Lowered Floor Conversion (Foldout Ramp) featuring 2006 & 2007\* Chrysler Minivans

\*(including some late 2005 conversions)



*Because Life is a Moving Experience*



# INTRODUCTION

## Introduction

Braun lowered floor conversions are designed to provide years of pleasure and mobility independence. Familiarity with proper operation and maintenance procedures will help ensure safe, troublefree operation.

Safety precautions, maintenance and troubleshooting details are provided. Wiring Diagrams and Electrical Schematics are provided to aid in troubleshooting. A Repair Parts section with exploded views and corresponding parts lists are also provided.

Refer to the information applicable for the conversion you are servicing and disregard the information that does not apply.

### Warranty and Return Authorization

Refer to the Limited Warranty Booklet for detailed terms and provisions. When processing any war-

ranty claims (parts, repairs, etc.), all requests must be processed through the Braun Corporation Product Support Department. Product Support will issue a Return Material Authorization (RMA) number and detail the procedures required for processing returns and/or authorizing credit.

## ⚠ WARNING

**Maintenance, lubrication, troubleshooting and service procedures must be performed as specified by an authorized service technician. Failure to do so may result in serious bodily injury and/or property damage.**

The last eight digits of the vehicle identification number (VIN) **must be provided when filing a warranty claim or ordering parts.**

## Operation Quick Reference Guide

### Conversion Operation Overview

This overview provides a simplified explanation of conversion operation. Read the entire owner's (operator's) manual for complete details. Contact The Braun Corporation if any of this information is not understood.

### Power Operation

Conversion power functions are managed by the One-Touch electronic control system. The control system can be activated using the Chrysler remote keyless entry transmitter, any one of the interior-mounted control switches or the optional magnetic entry.



Chrysler Remote Keyless Entry Transmitter

**Press and release** this switch two (2) times.

Control switches display the slide door graphic.



### One-Touch Control Activation

Conversion power door, ramp and kneel functions are activated by **pressing and releasing** any control switch (press and release remote entry transmitter button twice).

**Open Functions:** When activating the Open functions, the power door opens, the ramp deploys and the kneel system lowers the rear of the vehicle.

**Close Functions:** When activating the Close functions, the ramp stows first, and then the kneel system and the power door are activated simultaneously.

### Manual Operation

The passenger power sliding door and ramp can be manually operated. Read the owners manual for further details.

<b>Safety Precautions</b> .....	2	Electrical Schematic - 2006 & 2007*	
<b>Towing</b> .....	2	Chrysler Conversion (Foldout Ramp)	
<b>Maintenance and Service Requirements</b> .....	3	Power Door, Foldout Ramp & Kneel System	
<b>Maintenance and Lubrication Schedule</b> .....	4-6	(with Curtain Air bags) .....	19B, 20B
<b>Troubleshooting Diagnosis Chart</b> .....	7-10	Electrical Schematic - 2006 & 2007*	
<b>Microswitches</b> .....	11	Chrysler Conversion (Foldout Ramp)	
<b>Below Floor Obstructions</b> .....	12	Power Door, Foldout Ramp & Kneel System	
<b>Auxiliary Power Supply</b> .....	13	(without Curtain Air bags) .....	21A, 22A
<b>Switch and Component Location</b> .....	15A, 16A	Electrical Schematic - 2006 & 2007* Chrysler	
<b>Wiring Diagrams and Electrical Schematics</b>		Conversion (Foldout Ramp) Front Passenger	
Wiring Diagram - 2006 & 2007* Chrysler		Seat Electrical Systems (Memory) ...	21B, 22B
Conversion (Foldout Ramp) Power Door,		Electrical Schematic - 2006 & 2007*	
Foldout Ramp & Kneel System (with Curtain		Chrysler Conversion (Foldout Ramp) Front	
Air bags) .....	15B, 16B	Passenger Seat Electrical Systems	
Wiring Diagram - 2006 & 2007* Chrysler		(Non-Memory) .....	23A, 24A
Conversion (Foldout Ramp) Power Door,		<b>Repair Parts</b>	
Foldout Ramp & Kneel System (without		Exploded View - 2006 & 2007* Chrysler	
Curtain Air bags) .....	17A, 18A	Conversion (Foldout Ramp) Platform	
Wiring Diagram - 2006 & 2007* Chrysler		Assembly .....	23B, 24B, 25
Conversion (Foldout Ramp) Front Passenger		Exploded View - 2006 & 2007* Chrysler	
Seat Electrical Systems (Memory) ...	17B, 18B	Conversion (Foldout Ramp) Ramp	
Wiring Diagram - 2006 & 2007* Chrysler		Assembly Gear, Motor and Base	
Conversion (Foldout Ramp) Front		Assembly .....	26, 27A, 28A
Passenger Seat Electrical Systems		Exploded View - 2006 & 2007* Chrysler	
(Non-Memory) .....	19A, 20A	Conversion (Foldout Ramp) Ramp	
		Assembly .....	27B, 28B, 29
		Exploded View - 2006 & 2007* Chrysler	
		Conversion (Foldout Ramp) Kneel	
		Assembly .....	30, 31
		<b>Dimensions</b> .....	32

\* Includes some late 2005 conversions.

# SAFETY PRECAUTIONS

## Safety Precautions

### ⚠️ WARNING

Read this manual, the conversion's operator's manual and supplements before performing operation, maintenance or service procedures. Failure to do so may result in serious bodily injury and/or property damage.

- ⚠️ **WARNING** Maintenance and service procedures must be performed only by authorized service personnel.
- ⚠️ **WARNING** Perform maintenance and lubrication procedures exactly as outlined in the Maintenance and Lubrication Schedule contained in this manual.
- ⚠️ **WARNING** Perform troubleshooting and service procedures as outlined in this manual and/or service bulletins supplied with replacement parts.
- ⚠️ **WARNING** Replacement parts must be Braun authorized replacements.
- ⚠️ **WARNING** Do not attempt to interface aftermarket control systems without authorization from The Braun Corporation.

- ⚠️ **WARNING** Do not use accessory devices not authorized by The Braun Corporation.
- ⚠️ **WARNING** Keep clear of area in which the vehicle kneels (lowers).
- ⚠️ **WARNING** Keep clear of area in which ramp operates.
- ⚠️ **WARNING** Never modify (alter) a Braun Corporation lowered floor minivan conversion.
- ⚠️ **WARNING** Do not install a raised top on a Braun Corporation lowered floor minivan conversion.
- ⚠️ **WARNING** Use of a Braun Corporation lowered floor minivan conversion for towing is prohibited.
- ⚠️ **WARNING** Failure to follow these safety precautions may result in serious bodily injury and/or property damage.

## Towing

### Towing with a Lowered Floor Conversion

Use of a lowered floor conversion vehicle for towing is **prohibited**.

### Transporting a Lowered Floor Conversion

If case of service, The Braun Corporation recommends that lowered floor conversion vehicles be transported on a trailer rather than towed with one set of wheels suspended and the other set of wheels remaining in road contact.



**Trailer Transport**

## Maintenance and Service Requirements

Braun lowered floor minivan conversions must be maintained and serviced by a Braun authorized service representative who has attended and been certified by The Braun Corporation Sales and Service School for Braun Mobility Products.

Read and become familiar with the operating procedures outlined in the applicable operator's manual and the maintenance and troubleshooting information contained in this manual before beginning operation, maintenance or service procedures. Contact The Braun Corporation if any of this information is not understood.

**One-Touch Electronic Control System:** The electronic control system provides simple one-touch activation of power functions. For your convenience, the control system can be activated using the OEM remote keyless entry transmitter or one of the interior switches identified in the operator's manual.

### **Braun Corporation Aftermarket Control Systems Policy:**

The Braun Corporation manufactures dedicated control systems for its products. These control systems have been designed and tested for use in conjunction with specific Braun products. Braun control systems are the **only** control systems authorized for use with Braun products.

**Do not** attempt to interface aftermarket control systems without authorization from The Braun Corporation. **To do so may result in serious bodily injury and/or property damage.**

# MAINTENANCE and SERVICE

## Preventive Maintenance

Maintenance is necessary to ensure safe and trouble free conversion operation. Encourage the consumer to perform preventive maintenance procedures. General preventive maintenance consisting of inspections along with cleaning procedures should be a part of the consumers routine.

Keeping the passenger slide door lower track pan free of debris, ice and snow is one of the **most effective preventive maintenance practices** to exercise. Regular preventive maintenance procedures will increase the service life of the conversion, as well as enhancing safety.

The consumer should inspect and clean frequently and routinely (minimum four weeks or 100 cycle intervals).

**Note:** A Preventive Maintenance section is provided in the operator's manual.

## Maintenance and Lubrication Schedule

Normal vehicle maintenance must be performed as outlined in the OEM-supplied owner's manual. This maintenance is not the responsibility of The Braun Corporation.

The maintenance and lubrication procedures outlined in this schedule must be performed at the recommended scheduled intervals by a Braun authorized service representative.

**Clean** specified components and the surrounding area **before applying lubricants**. When replacing lubricated components, be sure to lubricate during installation procedures.

A "dri-film" style of light oil should be applied where \*Light Oil is called out (goes on wet and then dries). Lubricants of this type are available that do not attract dust and other debris. Use of improper lubricants can attract

dirt or other contaminants which could result in wear or damage to components. Avoid lubricants that can leave stains.

Some lubricants referenced in the schedule are available from The Braun Corporation (part numbers provided where specified).

All listed inspection, lubrication and maintenance procedures should be repeated at "3 month" intervals following the scheduled "6 month" maintenance. These intervals are a general guideline and will vary according to frequency of use and conditions. Exposure to severe conditions (weather, environment, contamination, heavy usage, etc.) may require inspection and maintenance procedures to be performed more often than specified.

**Discontinue use immediately** if maintenance and lubrication procedures are not properly per-

formed, or if there is any sign of wear, damage, improper operation or any abnormal condition. Contact your sales representative or call The Braun Corporation. One of our national Product Support representatives will direct you to an authorized service technician who will inspect your conversion.

### **WARNING**

**Maintenance and lubrication procedures must be performed as specified by an authorized service technician. Failure to do so may result in serious bodily injury and/or property damage.**

## Maintenance and Lubrication Schedule

<b>3 Months</b>	<b>Foldout Ramp:</b> Foldout ramps vary in design. Disregard references to components not present.	
	Outboard ramp extension hinge and fasteners	Clean and lubricate with *Light Oil. Resecure or replace fasteners as needed
	Inspect ramp inboard pivot points (bolts/screws and bushings/bearings) for positive securement, wear or damage	Clean and lubricate with *Light Oil. Tighten, replace or correct as needed
	Inspect ramp fold pickup bearing for positive securement, alignment, wear or other damage	Replace or correct as needed. If bearing retaining screw is not secure or is removed for service, apply Blue #242 Thread Locker Loctite to retaining screw and tighten.
	Inspect ramp fold arm for positive securement, alignment, wear or other damage	Tighten, replace or correct as needed
	Inspect ramp fold arm bearing slot for excessive wear or damage	Replace if needed
	Inspect ramp extension chain for proper alignment, securement or other defects	Realign, resecure, replace or otherwise correct as needed
	Inspect ramp floor mounting hardware for securement (loose or missing)	Resecure, replace or correct as needed
	<b>General Items</b>	
	Lower power slide door track	Inspect for obstructions and clean (vacuum or blow out debris using compressor)
Wheelchair and occupant restraint belts and tie down track	Inspect for any defects such as cuts, fraying or any malfunction of belt, buckle or securement hardware. Clean dirt and debris from tie down track. Replace immediately if damaged.	
Inspect removable seat bases for proper engagement of latching mechanisms	Replace or correct as needed	

# MAINTENANCE and SERVICE

## Maintenance and Lubrication Schedule

<b>6 Months</b>	<b>Perform all procedures listed in previous section also</b>	
	<p><b>Power Fold Ramps:</b></p> <ul style="list-style-type: none"> <li>• Ramp flap (extension) chain</li> </ul>	Lubricate with Anti-Seize (14 oz. caulk tube available per Braun part no. 24710)
	<p>Remove ramp housing cover/rear vertical panel and inspect:</p> <ul style="list-style-type: none"> <li>• Top mount bracket bolts for securement (loose or missing)</li> <li>• Motor mounting bolts for securement (loose or missing)</li> <li>• Ramp fold arm securement (collar and mounting screws)</li> <li>• Microswitches securement and adjustment</li> <li>• Microswitch wires and terminals for securement or damage</li> <li>• Magnetic switch (optional)</li> </ul>	<p>Resecure, adjust microswitches, replace damaged parts or otherwise correct as needed.</p> <p><b>Note:</b> See Ramp Microswitch Adjustment on page 11.</p>
	<p><b>Inspect power source:</b> Vehicle battery, 50 ampere fuse, vehicle engine compartment fuse block and driver side under dash-mounted fuse block.</p> <p><b>Inspect kneel actuator assembly for:</b></p> <ul style="list-style-type: none"> <li>• Actuator mounting pin securement</li> <li>• Inspect chain for misalignment, wear or damage</li> <li>• Inspect chain master-links for securement</li> <li>• Inspect chain idler (pulley) for securement, wear, damage or misalignment</li> <li>• Inspect electrical harnesses for positive connections, proper routing, wear or other damage</li> <li>• Kneel microswitch(es) securement, wear or other damage</li> </ul>	<p>Resecure, repair or replace</p> <p>Realign, resecure, replace damaged parts or otherwise correct as needed. <b>Note:</b> See Kneel Actuator Assembly exploded view on page 31.</p>
	Kneel assembly chain	Lubricate with Anti-Seize (14 oz. caulk tube available per Braun part no. 24710)

<b>Consecutive 3 Month Intervals</b>	<p><b>Repeat all</b> previously listed inspection, lubrication and maintenance procedures at <b>3 month</b> intervals.</p>
--------------------------------------	--



## Troubleshooting Diagnosis Chart

### WARNING

Troubleshooting and repair procedures must be performed as specified by an authorized service technician only. Failure to do so may result in serious bodily injury and/or property damage.

Operation should be discontinued immediately if a conversion problem occurs. **Repairs should not be attempted by the consumer.** Contact the sales representative or call The Braun Corporation. One of our national Product Support representatives will direct you to an authorized service technician who will inspect your vehicle.

The cause of the problem can be determined by locating the function and related symptom in the Troubleshooting Diagnosis

Charts. The specific cause and remedy can then be determined by process of elimination. Electrical Schematics and Wiring Diagrams are provided to aid in troubleshooting.

A Repair Parts section with exploded views and corresponding parts lists is also provided. **Correct the problem if possible. If the problem continues, contact The Braun Corporation.**

FUNCTION	SYMPTOM	POSSIBLE CAUSE	REMEDY
<b>1.00 NO OPERATION</b>	<b>1.10 No Power to Conversion Systems (Circuit Problem)</b>	1.11 Poor ground connection 1.12 Battery terminals dirty 1.13 Battery damaged 1.14 Battery discharged 1.15 12 volt source (check fuses for 12 volts) 1.16 Circuit breaker tripped or damaged	Clean and tighten Clean and tighten Replace Charge battery Check for blown fuse, loose terminals or broken wire or cable Reset or replace
	<b>1.20 Power to Conversion Systems But No Operation</b>	1.21 Transmission not in Park 1.22 Chrysler Slide Door Master Lock Out switch in OFF position 1.23 Slide door handles have been manually operated 1.24 Loose connection 1.25 Broken wire 1.26 Wire terminal 1.27 Control switch damaged 1.28 OEM keyless transmitter (FOB) does not function properly or damaged 1.29 Braun electronic controller	Engage transmission in Park Press switch to ON position  Press a control switch  Clean and tighten Repair or replace Crimp tightly to wire Replace Relocate to avoid interference, replace battery or replace transmitter. See OEM owner's manual. Press main electronic controller reset button and try operation again. If no operation - run serial diagnostics test. If no operation - contact Braun Product Support.

# TROUBLESHOOTING

FUNCTION	SYMPTOM	POSSIBLE CAUSE	REMEDY
<b>2.00 KNEEL SYSTEM (LOWER)</b>	<b>2.10 No Lower Operation</b>	2.11 See 1.00 2.12 Kneel On/Off switch is in OFF position. 2.13 Actuator harness disconnected or otherwise damaged 2.14 Actuator damaged. 2.15 Chain disconnected or otherwise damaged	Press switch to ON position  Connect, repair or replace  Replace if damaged. Connect, repair or replace
	<b>2.20 Faulty Kneel (Lower) Operation</b>	2.21 Mechanical binding 2.22 Misalignment or damage to kneel system components. Inspect kneel actuator assembly for: <ul style="list-style-type: none"> <li>• Actuator mounting pin securement (loose or missing)</li> <li>• Inspect chain for wear, misalignment, or other damage</li> <li>• Inspect chain pulley for securement, wear, misalignment or damage</li> </ul>	Check and correct Connect, replace or otherwise correct as needed
<b>3.00 POWER DOOR (OPEN)</b>	<b>3.10 No Open Operation (Motor Does Not Run)</b>	3.11 See 1.00 3.12 Door master lock-out switch ON 3.13 Power door motor harness disconnected or damaged 3.14 Power door motor damaged	Switch master lock-out switch to OFF Correct or contact Braun Product Support Contact Chrysler Service Center
	<b>3.20 Motor Runs But Door Does Not Move</b>	3.21 Misaligned or otherwise damaged drive cable or door track 3.22 Power door motor clutch failure	Correct or contact Braun Product Support Contact Chrysler Service Center
	<b>3.30 Faulty Open Operation</b>	3.31 Obstruction in door path 3.32 Mechanical binding	Remove obstruction Check and correct
	<b>3.40 Door Does Not Open Fully</b>	3.41 Door doesn't catch full open position hold latch 3.42 See 3.30	Correct or contact Braun Product Support

FUNCTION	SYMPTOM	POSSIBLE CAUSE	REMEDY
<b>4.00 FOLDOUT RAMP DEPLOY</b>	<b>4.10 No Unfold (Deploy) Operation</b>	4.11 See 1.00 and 3.41 4.12 No door full open signal  4.13 Ramp motor harness disconnected or damaged 4.14 Loose, damaged or missing fold arm securement collar/coupling and/or screws 4.15 Ramp Deploy microswitch out of adjustment or damaged 4.16 Ramp motor damaged	Correct or contact Braun Product Support Connect, repair or replace  Tighten, replace or otherwise correct as needed  Check connection, adjust or replace - See page 11 Replace motor
	<b>4.20 Ramp Contacts Door</b>	4.21 Door not fully open 4.22 See 3.41	Correct or contact Braun Product Support
	<b>4.30 Faulty Unfold (Deploy) Operation</b>	4.31 Ramp Deploy microswitch harness disconnected or damaged 4.32 Misalignment or damage to: <ul style="list-style-type: none"> <li>• Ramp fold bearing</li> <li>• Ramp fold arm</li> <li>• Ramp fold arm bearing slot</li> <li>• Ramp pivot points or hinge(s)</li> </ul> 4.33 Mechanical binding 4.34 See 3.41 and 4.15 4.35 Obstruction detected resulting in excessive motor current	Connect, repair or replace  Realign, tighten, replace damaged parts or otherwise correct as needed  Check and correct  Press main electronic controller reset button and try again. If no operation - contact Braun Product Support.
	<b>4.40 Faulty Ramp Extension Unfold (Deploy)</b>	4.41 Ramp extension chain broken, detached, misaligned or otherwise damaged 4.42 Lack of lubrication 4.43 Ramp hinge damage 4.44 See 4.35	Replace, attach, realign or otherwise correct  Lubricate - See Maintenance and Lubrication Schedule Correct or replace as needed
<b>5.00 FOLDOUT RAMP STOW</b>	<b>5.10 No Fold (Stow) Operation</b>	5.11 See 1.00 5.12 Ramp Stow Position microswitch out of adjustment or damaged 5.13 Controller doesn't receive door close signal 5.14 See 4.13, 4.14 and 4.16	Check connection, adjust or replace.  Correct or contact Braun Product Support
	<b>5.20 Faulty Fold (Stow) Operation</b>	5.21 Ramp Stow Position microswitch harness disconnected or damaged 5.22 Fold arm support/stop out of adjustment 5.23 See 3.41, 4.13, 4.14, 4.32, 4.33, 4.35, 4.42 and 4.43	Connect, repair or replace  Adjust support/stop for more travel

# TROUBLESHOOTING

FUNCTION	SYMPTOM	POSSIBLE CAUSE	REMEDY
<b>6.00 POWER DOOR (CLOSE)</b>	<b>6.10 No Close Operation</b>	6.11 See 3.10 and 4.12 6.12 Controller did not see stowed signal	Correct or contact Braun Product Support
	<b>6.20 Motor Runs - Door Does Not Move</b>	6.21 See 3.20	
	<b>6.30 Faulty Operation</b>	6.31 See 3.30	
	<b>6.40 Door Does Not Close Fully (Door Kickback)</b>	6.41 See 3.30 6.42 Ramp obstructing door	Adjust ramp Stow Position micro-switch inward (toward cabin area) - See next page
	<b>6.50 Door Contacts Ramp When Closing</b>	6.51 Ramp Stow Position microswitch out of adjustment 6.52 See 4.40 and 5.20	Adjust Ramp Stow Position micro-switch inward (toward cabin area) - See next page
<b>7.00 KNEEL SYSTEM (RAISE)</b>	<b>7.10 No Raise Operation</b>	7.11 See 1.00, 2.12, 2.13, 2.14 and 2.15	Connect/repair harness or replace microswitch
	<b>7.20 Faulty Operation</b>	7.21 See 2.20	

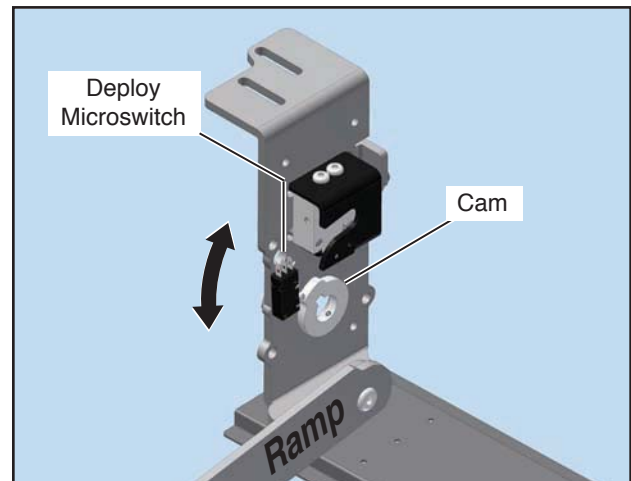
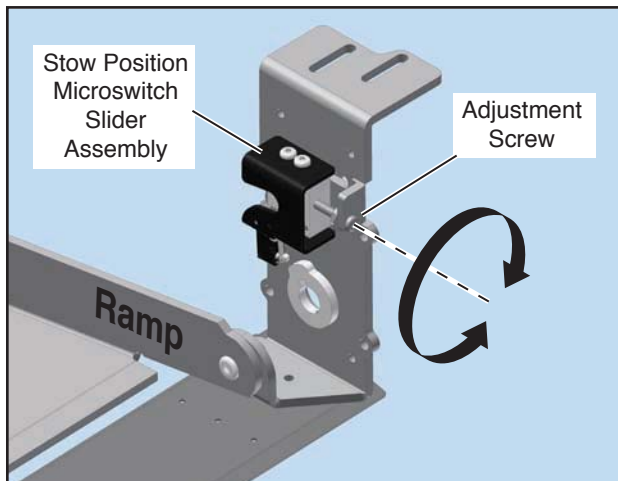
## Ramp Microswitch Adjustment

The ramp motor assembly is equipped with two microswitches, the deploy microswitch and stow position microswitch.

The deploy microswitch cuts the ramp motor when the platform reaches a position where the ramp will complete the deploy function by the force of gravity (ramp to ground level).

The stow position microswitch determines the full stow position (how far the ramp stows inside the vehicle).

Remove the ramp motor assembly interior cover to access microswitches (located rear of the passenger slide door).



**Stow Position Microswitch Adjustment:** An adjustment screw moves the position of the stow position slider assembly inward and outward. Turn the screw clockwise to adjust the ramp stowed position inward. Turn the screw counter-clockwise to adjust the ramp position outward. **Ensure** the ramp does not obstruct the power slide door (check per following procedure).

**Door Obstruction:** Manually open the slide door fully. Move the top of the ramp out slightly until the ramp enters the path of the door. Press a control switch. **Caution:** Observe and **stop door** if ramp does not stow fully **to avoid damage**. If the ramp stows fully and the door closes completely, the microswitch is adjusted properly. If the door contacts the ramp and kicks back or does not cinch, the stow microswitch needs to be adjusted inward. Adjust microswitch slider slightly and repeat procedures.

**Deploy Microswitch Adjustment:** The deploy microswitch is cam activated. The microswitch is secured with two mounting screws. The microswitch can slide in a rotary motion to change its position in relation to the cam. The deploy microswitch cuts power to the ramp motor, allowing the ramp to gravity down and complete the deploy function. Adjust the switch to allow gravity to complete the deploy operation. Ensure the ramp motor shuts off before the ramp reaches the horizontal position or below.

# BELOW FLOOR OBSTRUCTIONS

## 2006 & 2007\* Chrysler Lowered Floor Minivan (Foldout Ramp) Conversion

When installing an electrical tie-down, power seat or other auxiliary device, obstructions below the floor must be avoided. Obstructions include wiring, fuel system, brake lines, etc. Installers must be aware of these obstructions.

Refer to this illustration when installing aftermarket equipment to avoid contacting or damaging vital components under the floor.

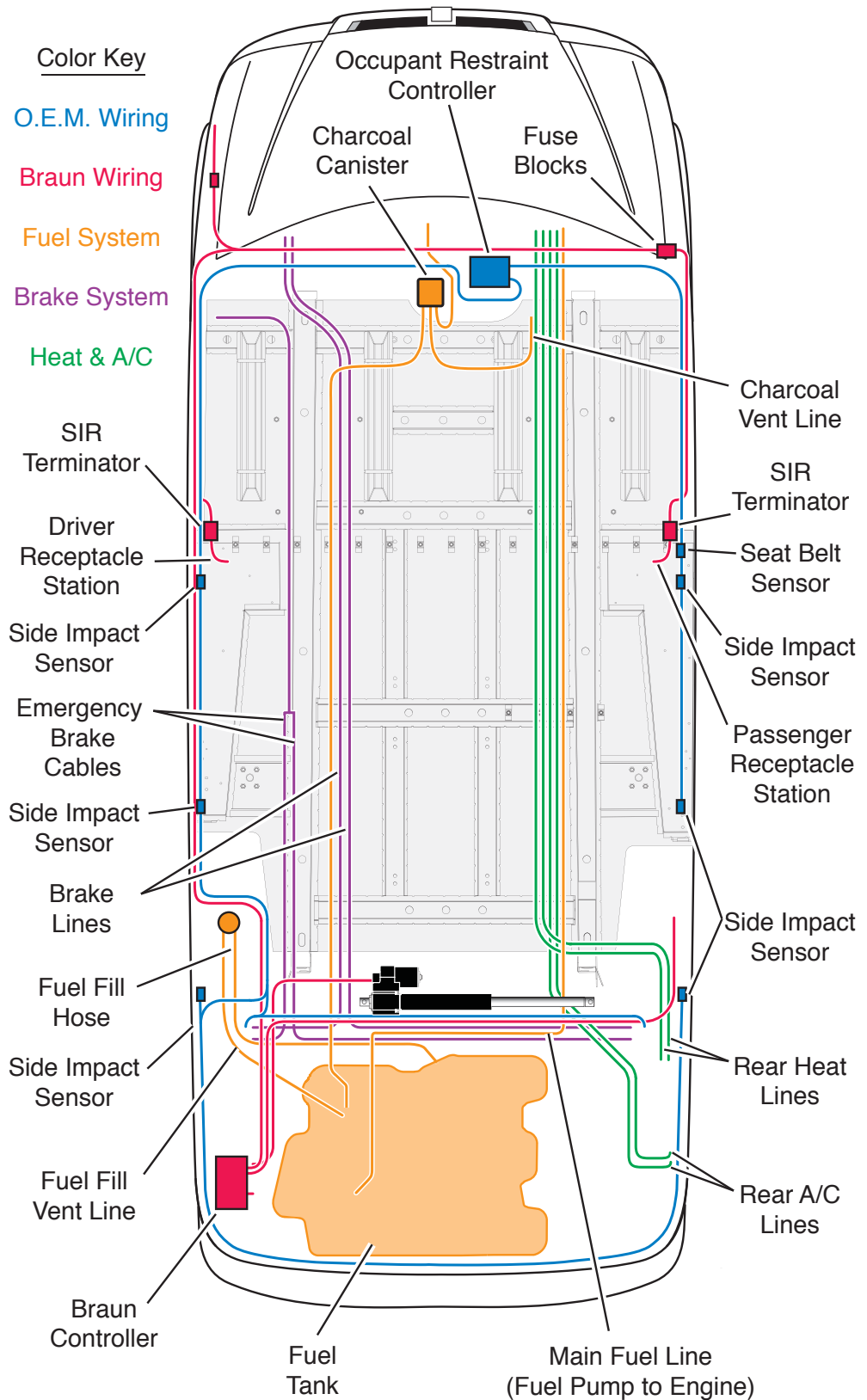
**Drilling or cutting into such obstructions may result in potential hazards as well as property damage.**

**Note:** Some wiring harnesses shown may not be present. Avoid all harness locations.

**\* Note:** Diagram includes some late 2005 conversions.

**⚠ WARNING**

Check for obstructions such as wires, gas lines, exhaust, etc. before drilling or cutting through floor. Failure to do so may result in serious bodily injury and/or property damage.



### ⚠ CAUTION

**Do not connect auxiliary devices to vehicle battery. Doing so may result in damage to electrical system and/or electronic components.**

**Auxiliary Power Supply:** Do not connect auxiliary devices directly to the vehicle battery. Doing so may result in damage to electrical system and/or electronic components.

Two fuse blocks are provided as an auxiliary power source for dealer-installed auxiliary electrical device(s). Fuse block details and specifications are provided below. The fuse blocks are located under the glove box.

#### **Below Floor Obstructions:**

When installing aftermarket equipment, obstructions below the floor must be avoided. Obstructions include wiring, fuel system, brake lines, etc. Installers must be aware of these obstructions.

Refer to the illustration on previous page to avoid contacting or damaging vital components under the floor.

### ⚠ WARNING



**Risk of electrical fire! Install and electrically terminate auxiliary electrical device as specified by device manufacturer.**

**Fuse Blocks:** Two fuse blocks are provided for use as an auxiliary power source (one **Ignition** fuse block and one **Battery** fuse block).

The Battery fuse block provides power at all times (independent of the vehicle ignition). The Ignition fuse block supplies power **only** when the vehicle ignition is on.

The **installer is responsible for supplying the correct gauge wire and fuse** for the particular device to be attached to the fuse block (**as specified** by the manufacturer of the device).

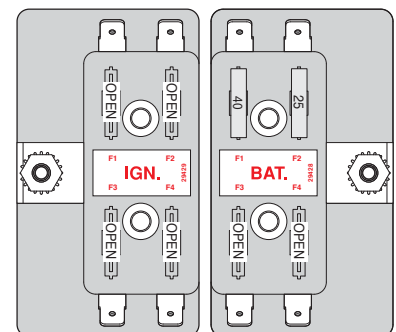
#### **Fuse Specifications:**

**Ignition Fuse Block:** The total maximum load must not exceed **40 amperes**.

**Battery Fuse Block:** The total maximum load must not exceed **40 amperes**.

**Note:** If installing an auxiliary electrical device that requires more than a **40 ampere** power source, **an alternative power source must be provided**.

#### **Under Dash Fuse Blocks**



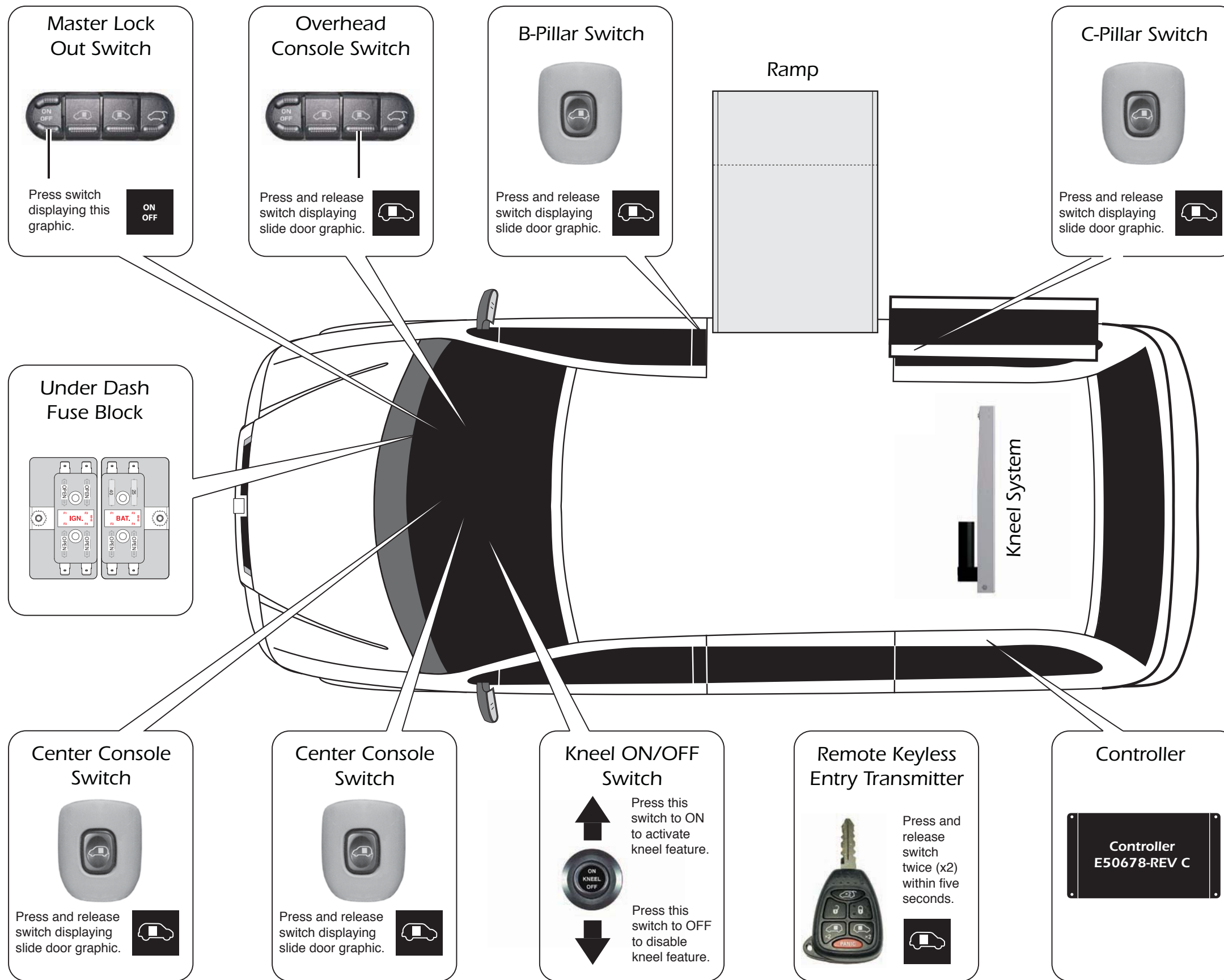
**BLANK for LAYOUT**





**2006 & 2007\* Chrysler Conversion (Foldout Ramp) Switch and Component Location Diagram**

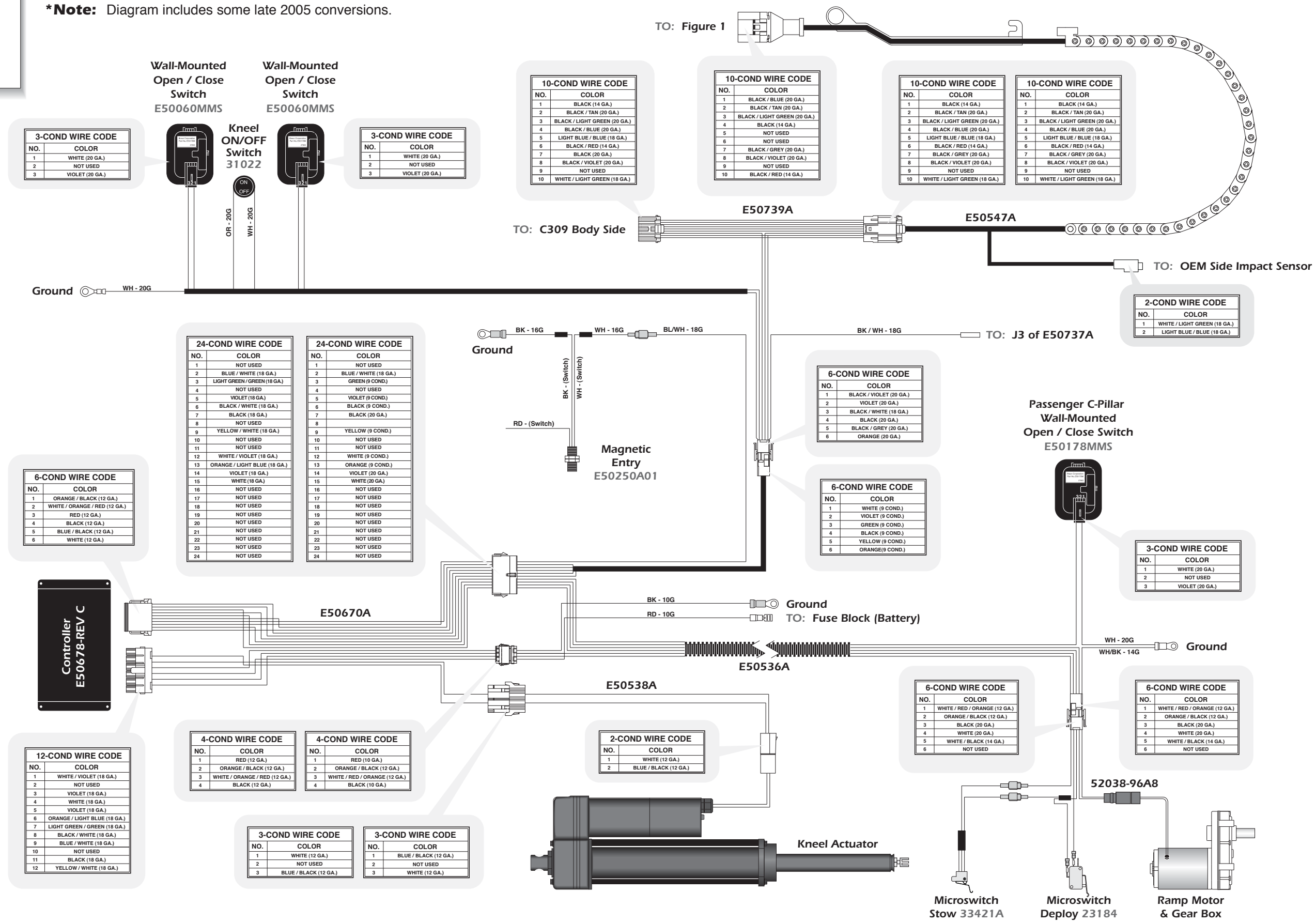
**\*Note:** Diagram includes some late 2005 conversions.



Unfold for:  
2006 & 2007 Foldout  
Switch & Component  
Location Diagram

# Wiring Diagram - 2006 & 2007\* Chrysler Conversion (Foldout Ramp) Power Door, Foldout Ramp & Kneel System (with Curtain Air bags)

\*Note: Diagram includes some late 2005 conversions.



**3-COND WIRE CODE**

NO.	COLOR
1	WHITE (20 GA.)
2	NOT USED
3	VIOLET (20 GA.)

**3-COND WIRE CODE**

NO.	COLOR
1	WHITE (20 GA.)
2	NOT USED
3	VIOLET (20 GA.)

**10-COND WIRE CODE**

NO.	COLOR
1	BLACK (14 GA.)
2	BLACK / TAN (20 GA.)
3	BLACK / LIGHT GREEN (20 GA.)
4	BLACK / BLUE (20 GA.)
5	LIGHT BLUE / BLUE (18 GA.)
6	BLACK / RED (14 GA.)
7	BLACK (20 GA.)
8	BLACK / VIOLET (20 GA.)
9	NOT USED
10	WHITE / LIGHT GREEN (18 GA.)

**10-COND WIRE CODE**

NO.	COLOR
1	BLACK / BLUE (20 GA.)
2	BLACK / TAN (20 GA.)
3	BLACK / LIGHT GREEN (20 GA.)
4	BLACK (14 GA.)
5	NOT USED
6	NOT USED
7	BLACK / GREY (20 GA.)
8	BLACK / VIOLET (20 GA.)
9	NOT USED
10	BLACK / RED (14 GA.)

**10-COND WIRE CODE**

NO.	COLOR
1	BLACK (14 GA.)
2	BLACK / TAN (20 GA.)
3	BLACK / LIGHT GREEN (20 GA.)
4	BLACK / BLUE (20 GA.)
5	LIGHT BLUE / BLUE (18 GA.)
6	BLACK / RED (14 GA.)
7	BLACK / GREY (20 GA.)
8	BLACK / VIOLET (20 GA.)
9	NOT USED
10	WHITE / LIGHT GREEN (18 GA.)

**10-COND WIRE CODE**

NO.	COLOR
1	BLACK (14 GA.)
2	BLACK / TAN (20 GA.)
3	BLACK / LIGHT GREEN (20 GA.)
4	BLACK / BLUE (20 GA.)
5	LIGHT BLUE / BLUE (18 GA.)
6	BLACK / RED (14 GA.)
7	BLACK / GREY (20 GA.)
8	BLACK / VIOLET (20 GA.)
9	NOT USED
10	WHITE / LIGHT GREEN (18 GA.)

**24-COND WIRE CODE**

NO.	COLOR
1	NOT USED
2	BLUE / WHITE (18 GA.)
3	LIGHT GREEN / GREEN (18 GA.)
4	NOT USED
5	VIOLET (18 GA.)
6	BLACK / WHITE (18 GA.)
7	BLACK (18 GA.)
8	NOT USED
9	YELLOW / WHITE (18 GA.)
10	NOT USED
11	NOT USED
12	WHITE / VIOLET (18 GA.)
13	ORANGE / LIGHT BLUE (18 GA.)
14	VIOLET (18 GA.)
15	WHITE (18 GA.)
16	NOT USED
17	NOT USED
18	NOT USED
19	NOT USED
20	NOT USED
21	NOT USED
22	NOT USED
23	NOT USED
24	NOT USED

**24-COND WIRE CODE**

NO.	COLOR
1	NOT USED
2	BLUE / WHITE (18 GA.)
3	GREEN (9 COND.)
4	NOT USED
5	VIOLET (9 COND.)
6	BLACK (9 COND.)
7	BLACK (20 GA.)
8	NOT USED
9	YELLOW (9 COND.)
10	NOT USED
11	NOT USED
12	WHITE (9 COND.)
13	ORANGE (9 COND.)
14	VIOLET (20 GA.)
15	WHITE (20 GA.)
16	NOT USED
17	NOT USED
18	NOT USED
19	NOT USED
20	NOT USED
21	NOT USED
22	NOT USED
23	NOT USED
24	NOT USED

**6-COND WIRE CODE**

NO.	COLOR
1	ORANGE / BLACK (12 GA.)
2	WHITE / ORANGE / RED (12 GA.)
3	RED (12 GA.)
4	BLACK (12 GA.)
5	BLUE / BLACK (12 GA.)
6	WHITE (12 GA.)

**6-COND WIRE CODE**

NO.	COLOR
1	BLACK / VIOLET (20 GA.)
2	VIOLET (20 GA.)
3	BLACK / WHITE (18 GA.)
4	BLACK (20 GA.)
5	BLACK / GREY (20 GA.)
6	ORANGE (20 GA.)

**6-COND WIRE CODE**

NO.	COLOR
1	WHITE (9 COND.)
2	VIOLET (9 COND.)
3	GREEN (9 COND.)
4	BLACK (9 COND.)
5	YELLOW (9 COND.)
6	ORANGE (9 COND.)

**2-COND WIRE CODE**

NO.	COLOR
1	WHITE / LIGHT GREEN (18 GA.)
2	LIGHT BLUE / BLUE (18 GA.)

**3-COND WIRE CODE**

NO.	COLOR
1	WHITE (20 GA.)
2	NOT USED
3	VIOLET (20 GA.)

**6-COND WIRE CODE**

NO.	COLOR
1	WHITE / RED / ORANGE (12 GA.)
2	ORANGE / BLACK (12 GA.)
3	BLACK (20 GA.)
4	WHITE (20 GA.)
5	WHITE / BLACK (14 GA.)
6	NOT USED

**6-COND WIRE CODE**

NO.	COLOR
1	WHITE / RED / ORANGE (12 GA.)
2	ORANGE / BLACK (12 GA.)
3	BLACK (20 GA.)
4	WHITE (20 GA.)
5	WHITE / BLACK (14 GA.)
6	NOT USED

**4-COND WIRE CODE**

NO.	COLOR
1	RED (12 GA.)
2	ORANGE / BLACK (12 GA.)
3	WHITE / ORANGE / RED (12 GA.)
4	BLACK (12 GA.)

**4-COND WIRE CODE**

NO.	COLOR
1	RED (10 GA.)
2	ORANGE / BLACK (12 GA.)
3	WHITE / RED / ORANGE (12 GA.)
4	BLACK (10 GA.)

**2-COND WIRE CODE**

NO.	COLOR
1	WHITE (12 GA.)
2	BLUE / BLACK (12 GA.)

**3-COND WIRE CODE**

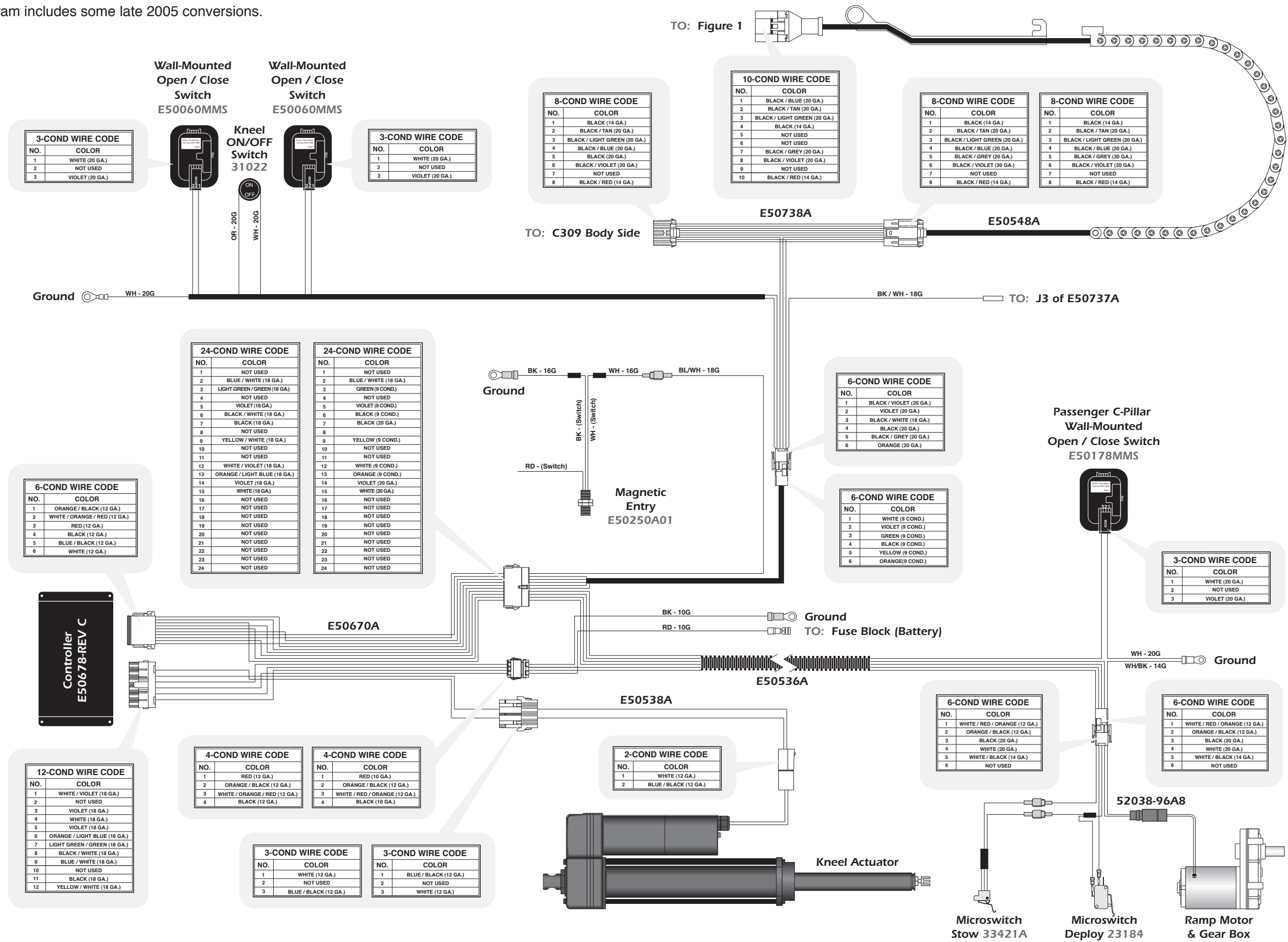
NO.	COLOR
1	WHITE (12 GA.)
2	NOT USED
3	BLUE / BLACK (12 GA.)

**3-COND WIRE CODE**

NO.	COLOR
1	BLUE / BLACK (12 GA.)
2	NOT USED
3	WHITE (12 GA.)

# Wiring Diagram - 2006 & 2007\* Chrysler Conversion (Foldout Ramp) Power Door, Foldout Ramp & Kneel System (without Curtain Air Bags)

\*Note: Diagram includes some late 2005 conversions.



Unfold for:  
Wiring Diagram  
2006 & 2007 Chrysler  
Conversion (Foldout Ramp)  
without Curtain Air bags

## Wiring Diagram - 2006 & 2007\* Chrysler Conversion (Foldout Ramp) Front Passenger Seat Electrical Systems (Memory)

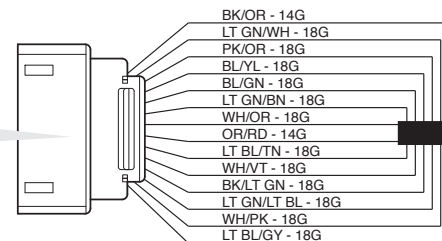
\*Note: Diagram includes some late 2005 conversions.

### DRAWING NOTES

Junctions only occur at intersections with junctions symbol (+).  
All other intersections are wire crossings **without** junctions!

TO: C306 (SEAT SIDE)

PIN	COLOR
1	BLACK / ORANGE - 14G
2	LT GREEN / WHITE - 18G
3	PINK / ORANGE - 18G
4	BLUE / YELLOW - 18G
5	BLUE / GREEN - 18G
6	LT GREEN / BROWN - 18G
7	WHITE / ORANGE - 18G
8	ORANGE / RED - 18G
9	LT BLUE / TAN - 18G
10	WHITE / VIOLET - 18G
11	BLACK / LT GREEN - 18G
12	NOT USED
13	NOT USED
14	LT GREEN / LT BLUE - 18G
15	WHITE / PINK - 18G
16	LT BLUE / GREY - 18G



37-COND WIRE CODE					
PIN	COLOR	PIN	COLOR	PIN	COLOR
1	PINK / ORANGE - 18G	14	NOT USED	27	BLUE / YELLOW - 18G
2	LT GREEN / BROWN - 18G	15	BLACK / ORANGE - 14G	28	BLUE / GREEN - 18G
3	NOT USED	16	NOT USED	29	NOT USED
4	NOT USED	17	NOT USED	30	NOT USED
5	NOT USED	18	LT GREEN / WHITE - 18G	31	NOT USED
6	WHITE / ORANGE - 18G	19	WHITE / PINK - 18G	32	BLACK - 18G
7	WHITE / VIOLET - 18G	20	ORANGE / RED - 14G	33	BLACK - 18G
8	NOT USED	21	NOT USED	34	LT BLUE / GREY - 18G
9	BLACK / LT GREEN - 18G	22	NOT USED	35	LT BLUE / TAN - 18G
10	NOT USED	23	NOT USED	36	BLACK - 18G
11	LT GREEN / LT BLUE - 18G	24	NOT USED	37	BLACK - 18G
12	NOT USED	25	NOT USED		
13	NOT USED	26	NOT USED		

TO: PASSENGER B-PILLAR (J2)

TO: PASS. SEAT HARNESS (P2)

37-COND WIRE CODE					
PIN	COLOR	PIN	COLOR	PIN	COLOR
1	PINK / ORANGE - 18G	14	NOT USED	27	BLUE / YELLOW - 18G
2	LT GREEN / BROWN - 18G	15	BLACK / ORANGE - 14G	28	BLUE / GREEN - 18G
3	NOT USED	16	NOT USED	29	NOT USED
4	NOT USED	17	NOT USED	30	NOT USED
5	NOT USED	18	LT GREEN / WHITE - 18G	31	NOT USED
6	WHITE / ORANGE - 18G	19	WHITE / PINK - 18G	32	BLACK / RED - 18G
7	WHITE / VIOLET - 18G	20	ORANGE / RED - 14G	33	BLACK / WHITE - 18G
8	NOT USED	21	NOT USED	34	LT BLUE / GREY - 18G
9	BLACK / LT GREEN - 18G	22	NOT USED	35	LT BLUE / TAN - 18G
10	NOT USED	23	NOT USED	36	BLACK / WHITE - 18G
11	LT GREEN / LT BLUE - 18G	24	NOT USED	37	BLACK / RED - 18G
12	NOT USED	25	NOT USED		
13	NOT USED	26	NOT USED		

TO: DRIVER B-PILLAR (J2)

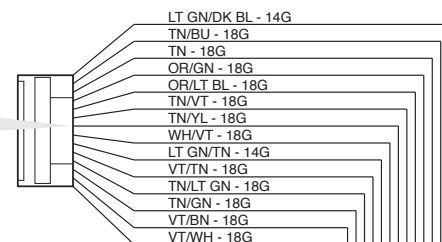
37-COND WIRE CODE					
PIN	COLOR	PIN	COLOR	PIN	COLOR
1	LT GREEN / DK BLUE - 14G	14	VIOLET / WHITE - 18G	27	NOT USED
2	TAN / DK BLUE - 18G	15	BLACK / ORANGE - 14G	28	NOT USED
3	TAN - 18G	16	LT GREEN / GREY - 18G	29	NOT USED
4	ORANGE / GREEN - 18G	17	LT GREEN / TAN - 18G	30	NOT USED
5	LT ORANGE / LT BLUE - 18G	18	PINK / GREEN - 18G	31	NOT USED
6	TAN / VIOLET - 18G	19	WHITE / PINK - 18G	32	NOT USED
7	TAN / YELLOW - 18G	20	ORANGE / RED - 14G	33	NOT USED
8	WHITE / VIOLET - 18G	21	LT GREEN / YELLOW - 18G	34	NOT USED
9	LT GREEN / TAN - 14G	22	LT GREEN / GREEN - 18G	35	NOT USED
10	VIOLET / TAN - 18G	23	NOT USED	36	BLACK - 18G
11	TAN / LT GREEN - 18G	24	LT GREEN / WHITE - 18G	37	BLACK - 18G
12	TAN / DK GREEN - 18G	25	LT GREEN / ORANGE - 18G		
13	VIOLET / BROWN - 18G	26	NOT USED		

TO: DRIVER SEAT HARNESS (P2)

37-COND WIRE CODE					
PIN	COLOR	PIN	COLOR	PIN	COLOR
1	LT GREEN / DK BLUE - 14G	14	VIOLET / WHITE - 18G	27	NOT USED
2	TAN / BLUE - 18G	15	BLACK / ORANGE - 14G	28	NOT USED
3	TAN - 18G	16	LT GREEN / GREY - 18G	29	NOT USED
4	ORANGE / GREEN - 18G	17	LT GREEN / TAN - 18G	30	NOT USED
5	ORANGE / LT BLUE - 18G	18	PINK / GREEN - 18G	31	NOT USED
6	TAN / VIOLET - 18G	19	WHITE / PINK - 18G	32	NOT USED
7	TAN / YELLOW - 18G	20	ORANGE / RED - 14G	33	NOT USED
8	WHITE / VIOLET - 18G	21	LT GREEN / YELLOW - 18G	34	NOT USED
9	LT GREEN / TAN - 14G	22	LT GREEN / GREEN - 18G	35	NOT USED
10	VIOLET / TAN - 18G	23	NOT USED	36	BLACK - 18G
11	TAN / LT GREEN - 18G	24	NOT USED	37	BLACK / ORANGE - 18G
12	TAN / GREEN - 18G	25	NOT USED		
13	VIOLET / BROWN - 18G	26	NOT USED		

TO: C322 (SEAT SIDE)

PIN	COLOR
1	LT GREEN / DK BLUE - 14G
2	NOT USED
3	TAN / BLUE - 18G
4	NOT USED
5	TAN - 18G
6	ORANGE / GREEN - 18G
7	ORANGE / LT BLUE - 18G
8	TAN / VIOLET - 18G
9	TAN / YELLOW - 18G
10	NOT USED
11	WHITE / VIOLET - 18G
12	NOT USED
13	LT GREEN / TAN - 14G
14	NOT USED
15	NOT USED
16	VIOLET / TAN - 18G
17	TAN / LT GREEN - 14G
18	TAN / GREEN - 18G
19	VIOLET / BROWN - 18G
20	VIOLET / WHITE - 18G
21	NOT USED
22	NOT USED
23	NOT USED
24	NOT USED
25	NOT USED
26	NOT USED



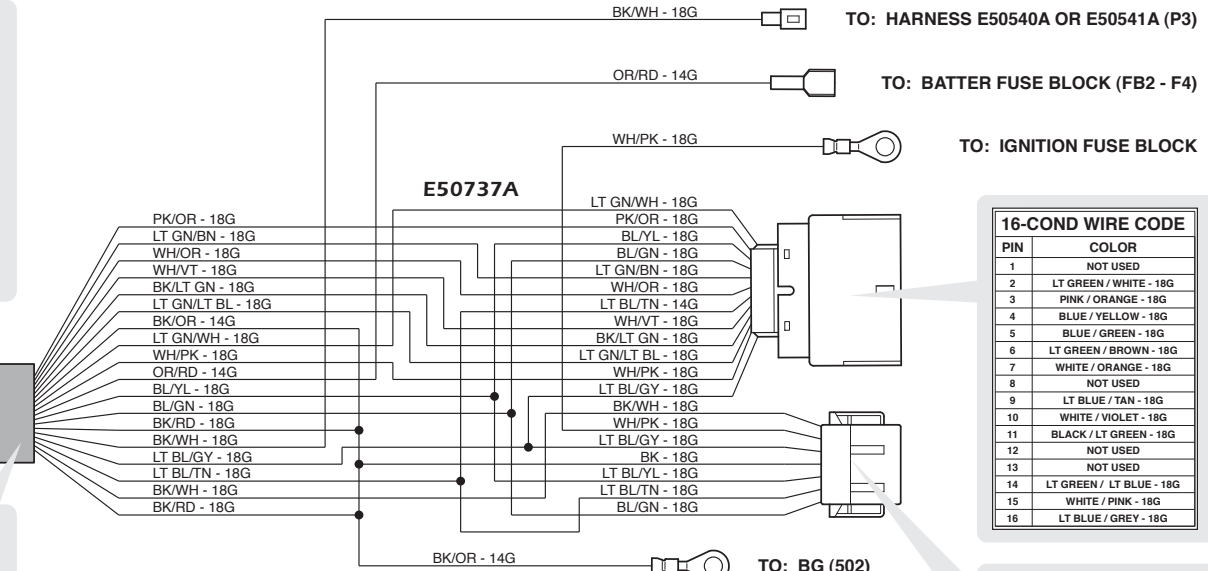
TO: C304 (SEAT SIDE)

PIN	COLOR
1	LT GREEN / YELLOW - 18G
2	LT GREEN / GREEN - 18G
3	LT GREEN / ORANGE - 18G
4	LT GREEN / WHITE - 18G



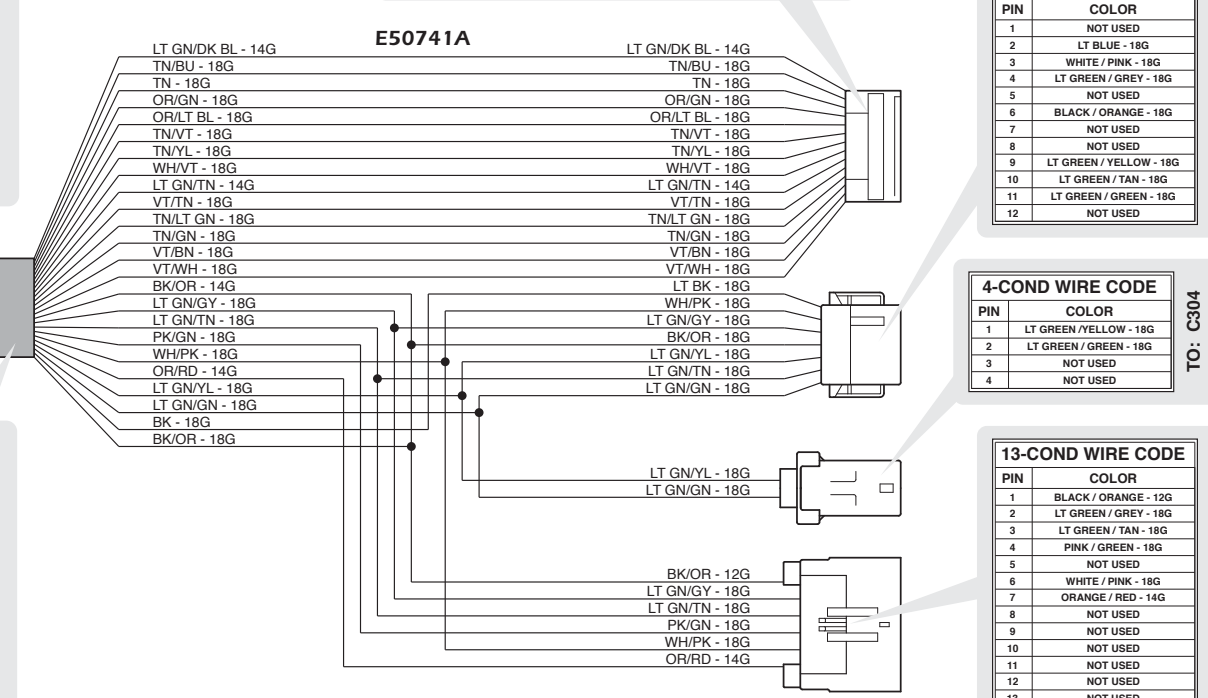
TO: C305 (SEAT SIDE)

PIN	COLOR
1	BLACK / ORANGE - 14G
2	LT GREEN / GREY - 18G
3	LT GREEN / TAN - 18G
4	PINK / GREEN - 18G
5	NOT USED
6	WHITE / PINK - 18G
7	ORANGE / RED - 14G
8	NOT USED
9	NOT USED
10	NOT USED
11	NOT USED
12	NOT USED
13	NOT USED



TO: 100016-001 MEMORY BOARD

26-COND WIRE CODE			
PIN	COLOR	PIN	COLOR
1	LT GREEN / DK BLUE - 14G	14	NOT USED
2	NOT USED	15	NOT USED
3	TAN / DK BLUE - 18G	16	VIOLET / TAN - 18G
4	NOT USED	17	TAN / LT GREEN - 18G
5	TAN - 18G	18	TAN / GREEN - 18G
6	ORANGE / GREEN - 18G	19	VIOLET / BROWN - 18G
7	ORANGE / LT BLUE - 18G	20	VIOLET / WHITE - 18G
8	TAN / VIOLET - 18G	21	NOT USED
9	TAN / YELLOW - 18G	22	NOT USED
10	NOT USED	23	NOT USED
11	WHITE / VIOLET - 18G	24	NOT USED
12	NOT USED	25	NOT USED
13	LT GREEN / TAN - 14G	26	NOT USED



TO: C306 (BODY SIDE)

PIN	COLOR
1	NOT USED
2	LT GREEN / WHITE - 18G
3	PINK / ORANGE - 18G
4	BLUE / YELLOW - 18G
5	BLUE / GREEN - 18G
6	LT GREEN / BROWN - 18G
7	WHITE / ORANGE - 18G
8	NOT USED
9	LT BLUE / TAN - 18G
10	WHITE / VIOLET - 18G
11	BLACK / LT GREEN - 18G
12	NOT USED
13	NOT USED
14	LT GREEN / LT BLUE - 18G
15	WHITE / PINK - 18G
16	LT BLUE / GREY - 18G

TO: SIR MODULE

PIN	COLOR
1	NOT USED
2	BLACK / WHITE - 18G
3	WHITE / PINK - 18G
4	LT BLUE / GREY - 18G
5	NOT USED
6	NOT USED
7	BLACK - 18G
8	NOT USED
9	LT BLUE / YELLOW - 18G
10	LT BLUE / TAN - 18G
11	BLUE / GREEN - 18G
12	NOT USED

TO: SIR MODULE

PIN	COLOR
1	NOT USED
2	LT BLUE - 18G
3	WHITE / PINK - 18G
4	LT GREEN / GREY - 18G
5	NOT USED
6	BLACK / ORANGE - 18G
7	NOT USED
8	NOT USED
9	LT GREEN / YELLOW - 18G
10	LT GREEN / TAN - 18G
11	LT GREEN / GREEN - 18G
12	NOT USED

TO: C304 (BODY SIDE)

PIN	COLOR
1	LT GREEN / YELLOW - 18G
2	LT GREEN / GREEN - 18G
3	NOT USED
4	NOT USED

TO: C305 (BODY SIDE)

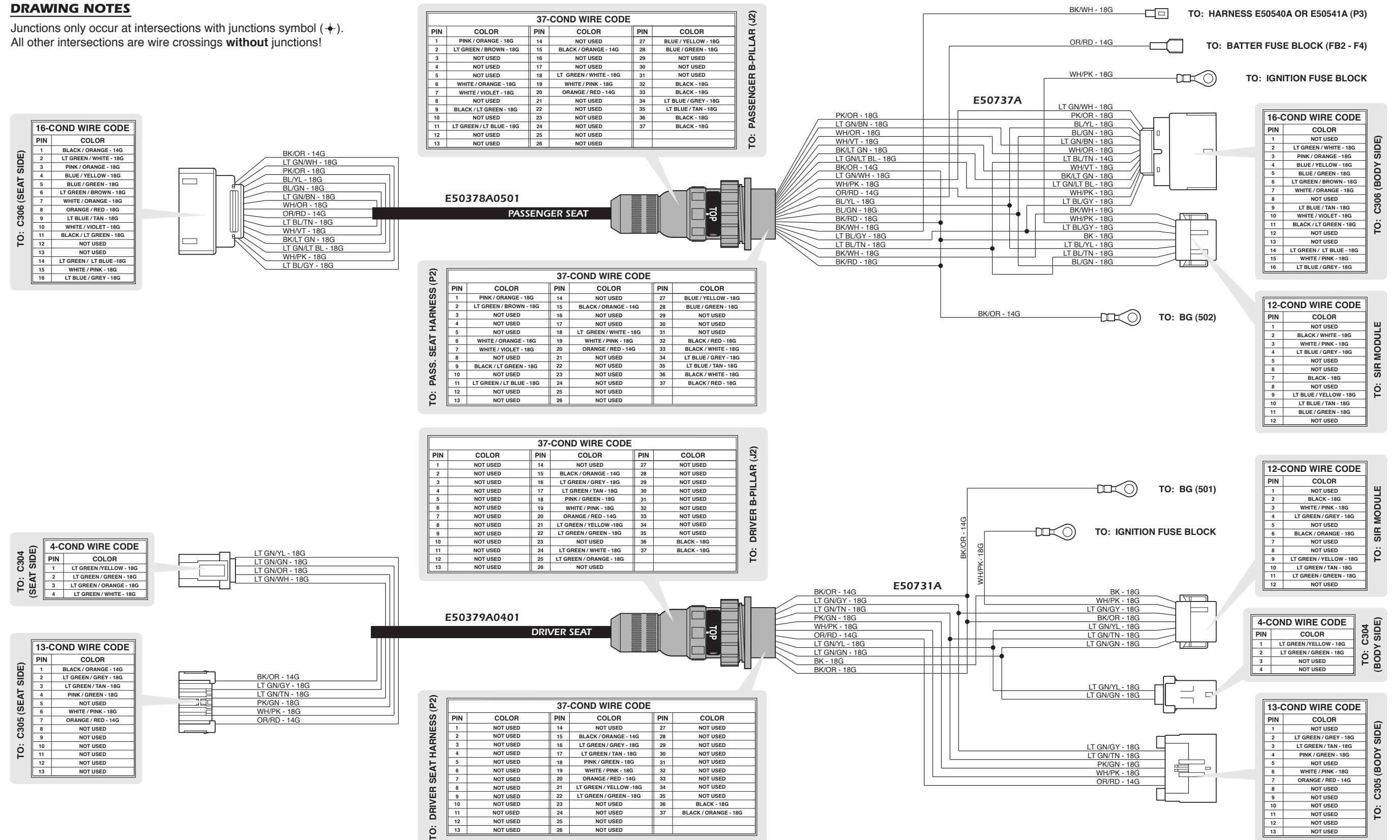
PIN	COLOR
1	BLACK / ORANGE - 12G
2	LT GREEN / GREY - 18G
3	LT GREEN / TAN - 18G
4	PINK / GREEN - 18G
5	NOT USED
6	WHITE / PINK - 18G
7	ORANGE / RED - 14G
8	NOT USED
9	NOT USED
10	NOT USED
11	NOT USED
12	NOT USED
13	NOT USED

# Wiring Diagram - 2006 & 2007\* Chrysler Conversion (Foldout Ramp) Front Passenger Seat Electrical Systems (Non-Memory)

**\*Note:** Diagram includes some late 2005 conversions.

## DRAWING NOTES

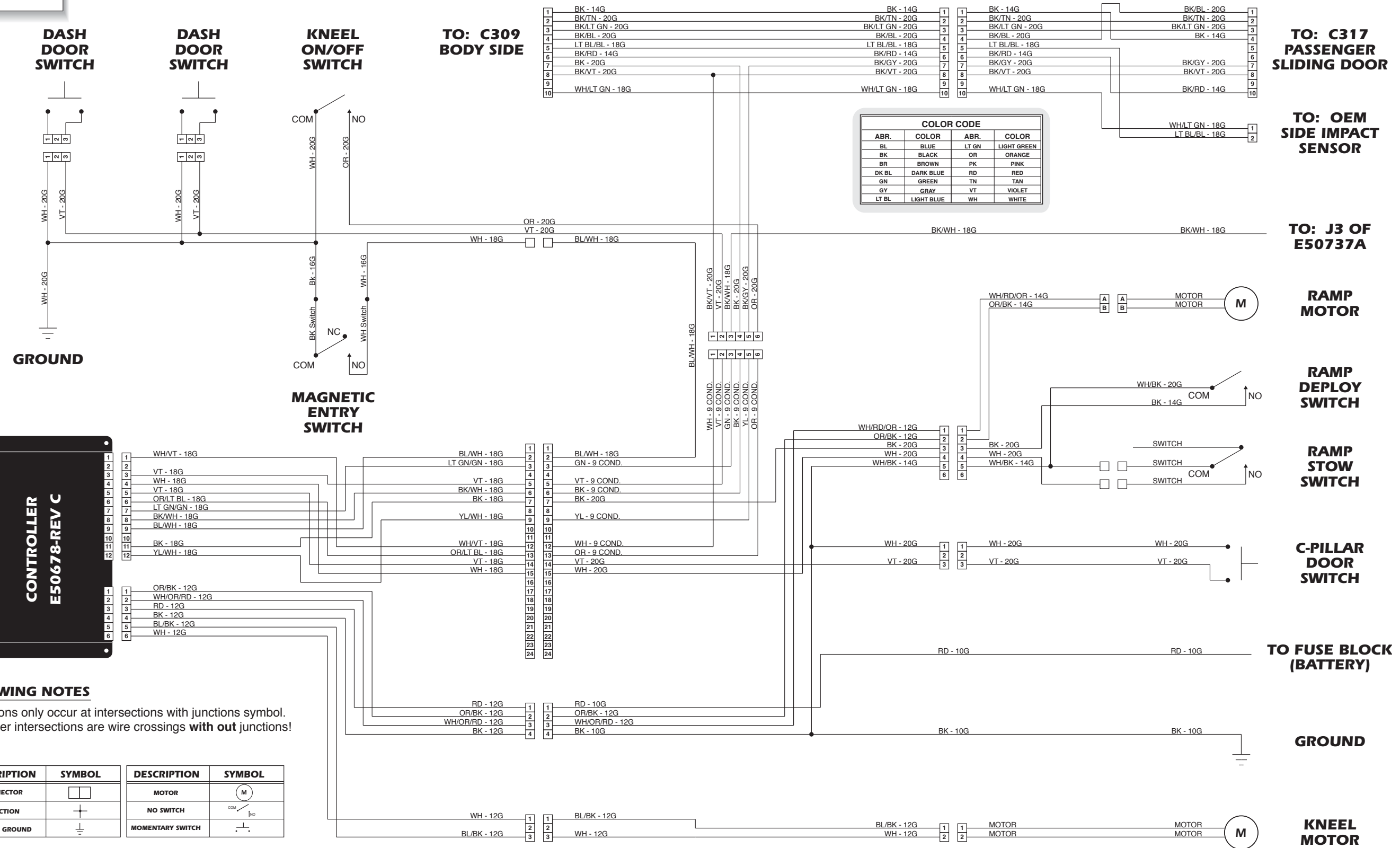
Junctions only occur at intersections with junctions symbol (⊕).  
All other intersections are wire crossings **without** junctions!



Unfold for:  
Wiring Diagram  
2006 & 2007 Chrysler  
Front Passenger Seat  
Electrical Systems (Non-Memory)

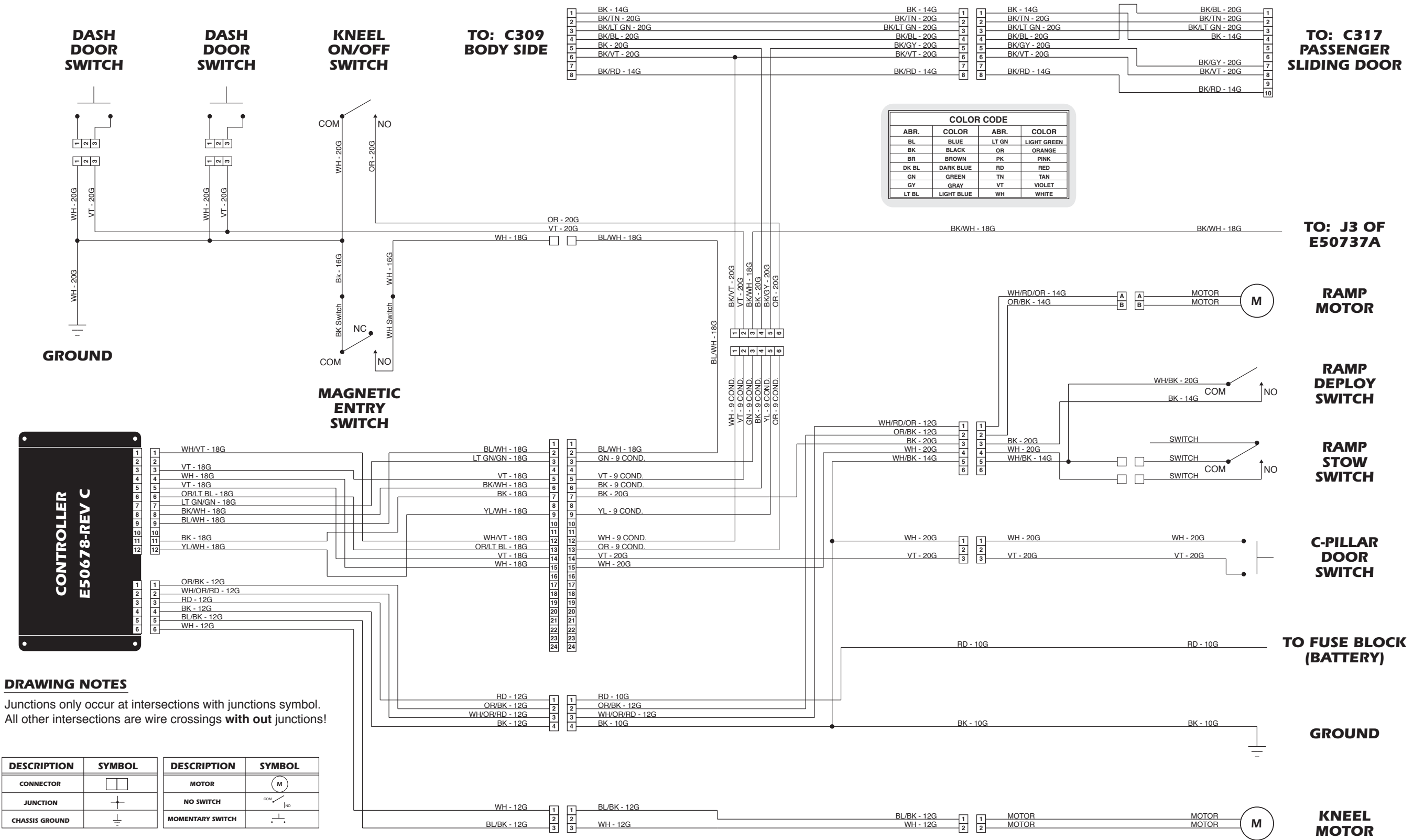
## Electrical Schematic - 2006 & 2007\* Chrysler Conversion (Foldout Ramp) Power Door, Foldout Ramp & Kneel System (with Curtain Air Bags)

\*Note: Diagram includes some late 2005 conversions.



# Electrical Schematic - 2006 & 2007\* Chrysler Conversion (Foldout Ramp) Power Door, Foldout Ramp & Kneel System (without Curtain Air Bags)

\*Note: Diagram includes some late 2005 conversions.



Unfold for:  
 Electrical Schematic  
 2006 & 2007 Chrysler  
 (Foldout Ramp)  
 without Curtain Air bags

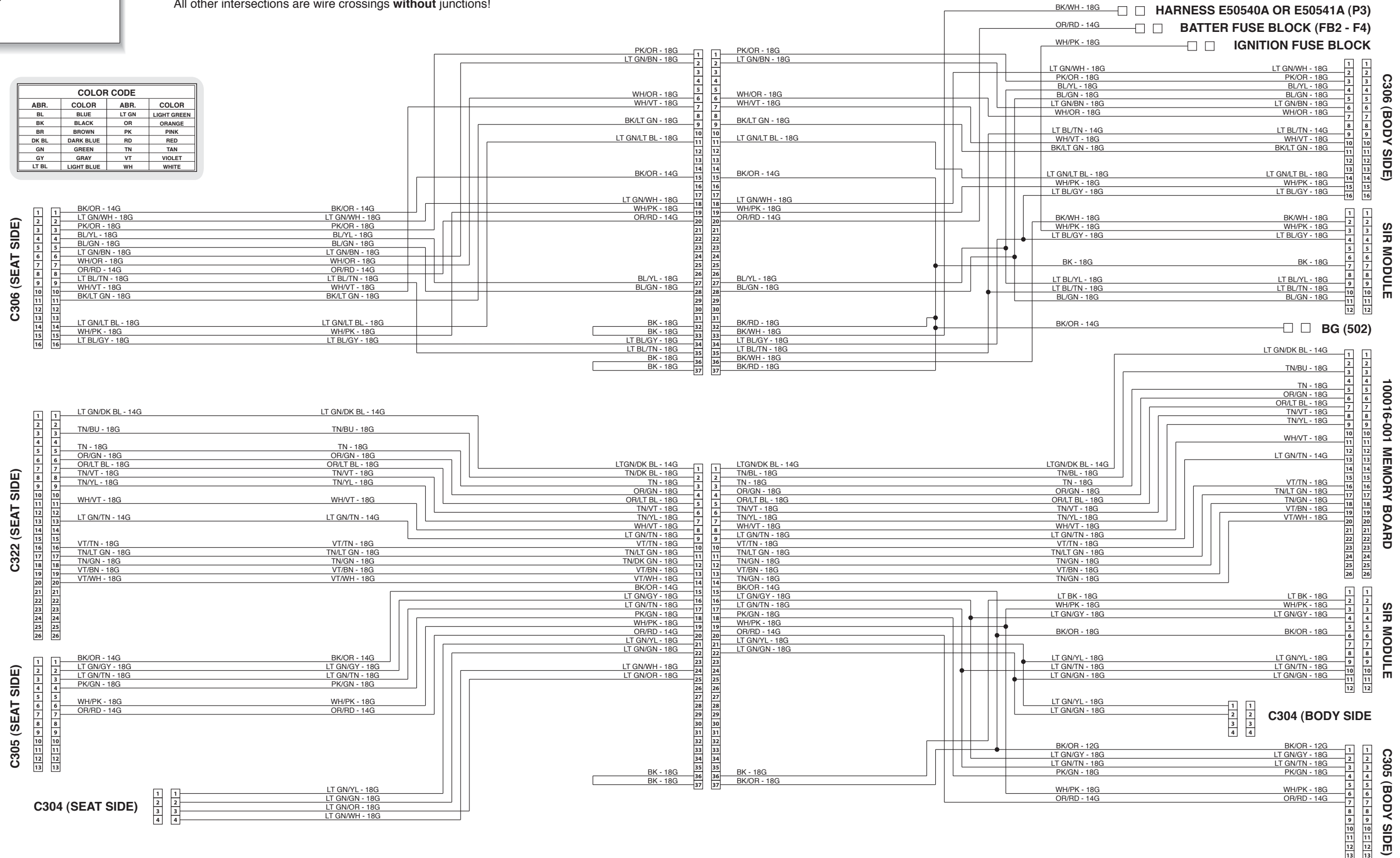
# Electrical Schematic - 2006 & 2007\* Chrysler Conversion (Foldout Ramp) Front Passenger Seat Electrical Systems (Memory)

## DRAWING NOTES

Junctions only occur at intersections with junctions symbol (+).  
 All other intersections are wire crossings **without** junctions!

\*Note: Diagram includes some late 2005 conversions.

COLOR CODE			
ABR.	COLOR	ABR.	COLOR
BL	BLUE	LT GN	LIGHT GREEN
BK	BLACK	OR	ORANGE
BR	BROWN	PK	PINK
DK BL	DARK BLUE	RD	RED
GN	GREEN	TN	TAN
GY	GRAY	VT	VIOLET
LT BL	LIGHT BLUE	WH	WHITE





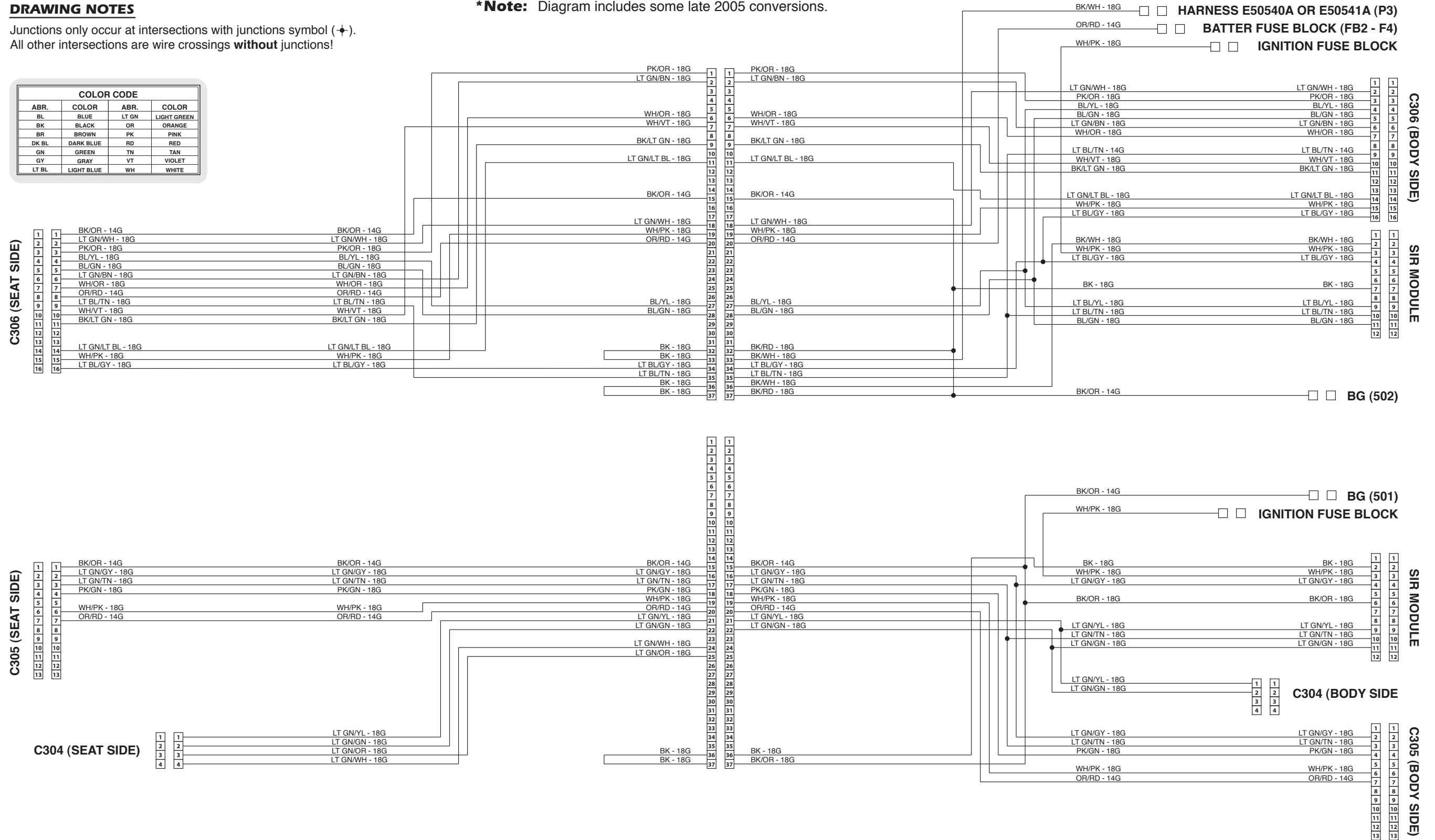
# Electrical Schematic - 2006 & 2007\* Chrysler Conversion (Foldout Ramp) Front Passenger Seat Electrical Systems (Non-Memory)

## DRAWING NOTES

Junctions only occur at intersections with junctions symbol (⊕).  
All other intersections are wire crossings **without** junctions!

**\*Note:** Diagram includes some late 2005 conversions.

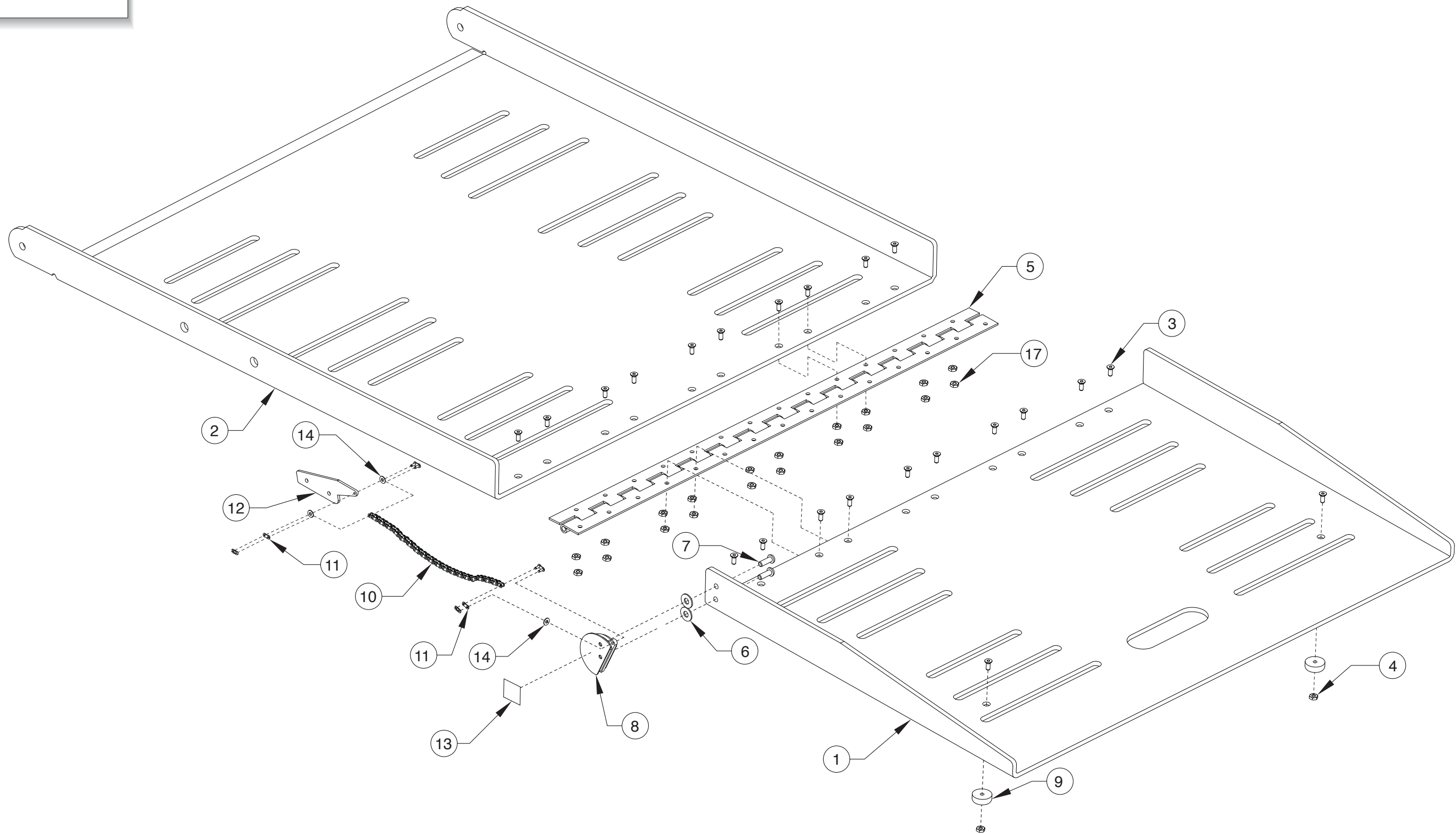
COLOR CODE			
ABR.	COLOR	ABR.	COLOR
BL	BLUE	LT GN	LIGHT GREEN
BK	BLACK	OR	ORANGE
BR	BROWN	PK	PINK
DK BL	DARK BLUE	RD	RED
GN	GREEN	TN	TAN
GY	GRAY	VT	VIOLET
LT BL	LIGHT BLUE	WH	WHITE



Unfold for:  
Electrical Schematic - 2006  
& 2007 Chrysler Conversion  
(Foldout Ramp) Non-Memory

# Exploded View - 2006 & 2007\* Chrysler Conversion (Foldout Ramp) Platform Assembly

\*Note: Diagram includes som late 2005 conversions.



## REPLACEMENT PARTS

### 2006 & 2007\* Chrysler Conversion (Foldout Ramp) Platform Assembly

Item	Qty.	Description	Part Number
1	1	RAMP-EXTENSION/29.25" AUTO/2004 CHRYSLER	E50262DK-05
2	1	RAMP-BASE/29.25" AUTO/TOYOTA	E90111DK
3	22	SCREW-#10-32X1/2 FHDHXS-AUTO BLK-W/PATCH	17192P
4	2	NUT-#10-32 W/LOCKWASHER/AUTO-BK	18349
5	1	HINGE WMT.-S.S. 2" X 1/4" X 29"	18619W029
6	2	WASHER-1/4" FLAT/AUTO-BK	10062
7	2	BOLT-1/4-20X3/4" BHCS NYLK/BKZN	25371
8	1	CAM-CAST RAMP	34317
9	2	BUMPER-RUBBER RECES.31/32 OD	10950
10	1	CHAIN-NICKEL PLATED #35 ROLLER X 9.38"	84314R009.38
11	2	LINK-CHAIN #35	12454
12	1	BRACKET-CABLE TENSIONER/OUTER/BLACK	52568-2907BK
13	1	DECAL-WARN CHAIN HAZ RAMP EVII	26134
14	3	#6 NYLON WASHER	82070-000
15 **	0.001	LOCTITE-BLUE/#242 GEN PURPOSE	18822
16 **	0.58	SHRINK TUBING-1/2"	14374R
17	20	NUT-10-32 HEX CENTER LOCK/AUTO-BK	34290BK

\*\* Item not shown

## REPLACEMENT PARTS

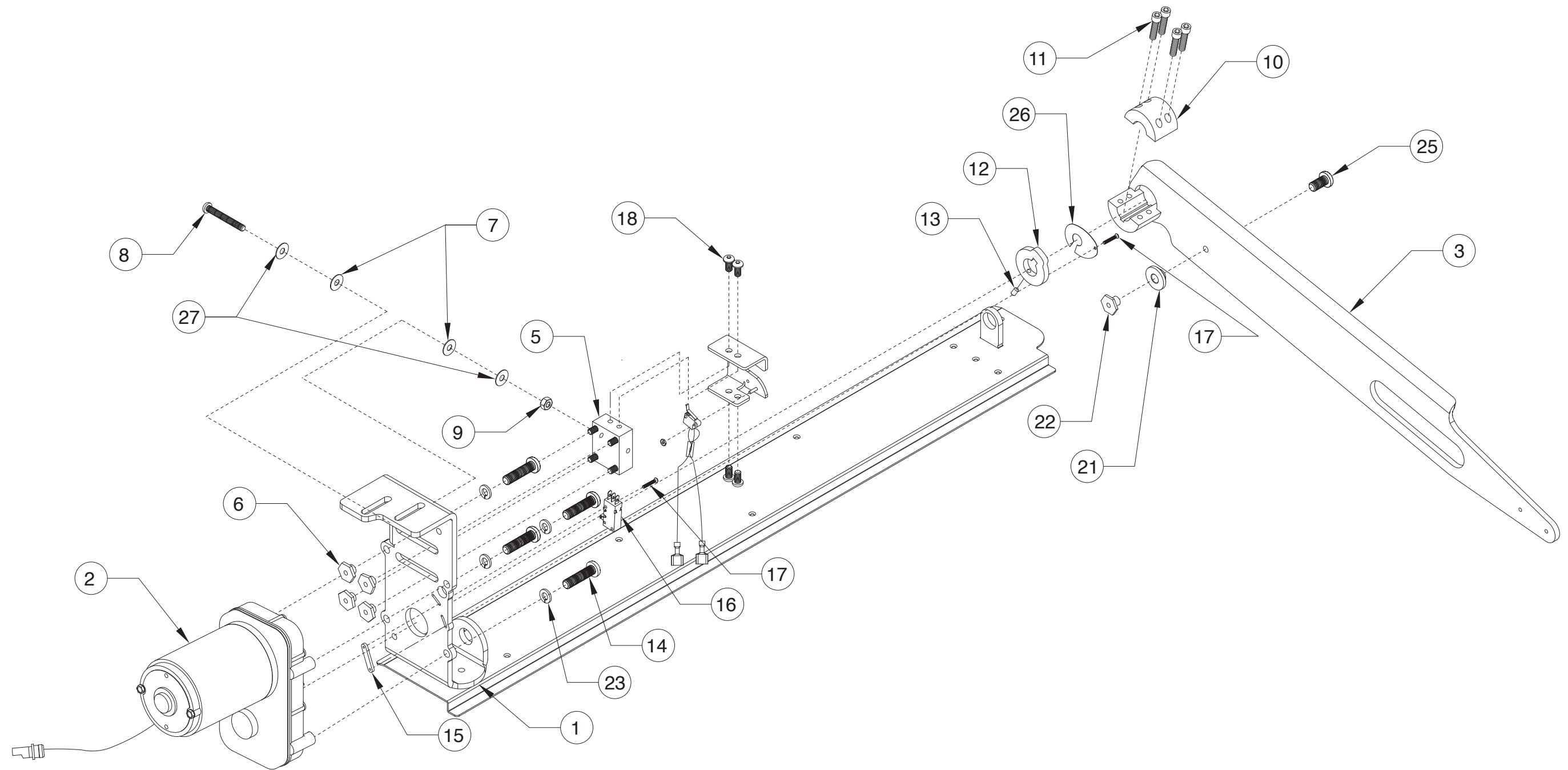
### 2006 & 2007\* Chrysler Conversion (Foldout Ramp) Ramp Assembly Gear, Motor and Base Assembly

Item	Qty.	Description	Part Number
1	1	WMT-MAIN RAMP HOUSING	E90108WDK
2	1	MOTOR-RAMP ASSY/KLAUBER 12V. 1.2 RPM	51654AK2907
3	1	WMT-ARM-DRIVES RAMP-GEAR MTR	E40268W-07BK
4**	1	SUPPORT-GEAR MOTOR/FOLDING RAMP	E40479BK
5	1	STOW SWITCH SLIDER	E40481
6	4	NUT-SHOULDER 3/4" HEX/0.27 H	32385
7	2	WASHER-NYLON 1/4IDX11/16X.030	12690
8	1	BOLT-1/4-20 X 3" ZN FT/AUTO-BK	23976
9	1	NUT-1/4-20 HEX LOCK/AUTO-BK	10775
10	1	COLLAR-SPLIT-3/4" SHAFT/RMP MTR/INNER/BK	52565-2905BK
11	4	SCREW-1/4-20 X 1" SOC HD CAP	24221
12	1	CAM-MICRO-SWITCH ADJUST-EV	52573-2905
13	1	SCREW-10-32 X 3/8 SET	84015-000
14	4	SCREW-5/16-18 X 7/8 BUTTON HD W/PATCH	81022
15	1	PLATE-TAPPED #4-40 MICRO SWITCH	24998
16	1	MICRO SWITCH-FLR LVL/CUPPED	23184
17	2	SCREW-#4-40 X 3/4" RD. HD./AUTO-BK	11483
18	4	BOLT-1/4-20 X 1/2 BUT HD SOC/AUTO-BK	15733
19 **	1	ASSEMBLY-FOLDING RAMP STOW SWITCH	33421A
20 **	1	NUT-#4-40 w/LOCKWASHER/AUTO-BK	19537
21	1	PIN-RAMP SUPPORT-96SC 29" RAMP	51815-2905
22	1	LATCH BOLT-SUPPORT-29" RAMP	51541-2905
23	4	WASHER-5/16" LOCK/AUTO-BK	10068
24 **	0.001	LOCTITE-BLUE/#242 GEN PURPOSE	18822
25	1	BOLT-1/4-20X3/4" BHCS NYLK/BKZN	25371
26	1	RAMP DEPLOY SWITCH ARMATURE GUIDE	34846
27	2	WASHER-1/4" FLAT/AUTO-BK	10062

\*\* Item not shown

**Exploded View - 2006 & 2007\* Chrysler Conversion (Foldout Ramp) Ramp Assembly Gear, Motor and Base Assembly**

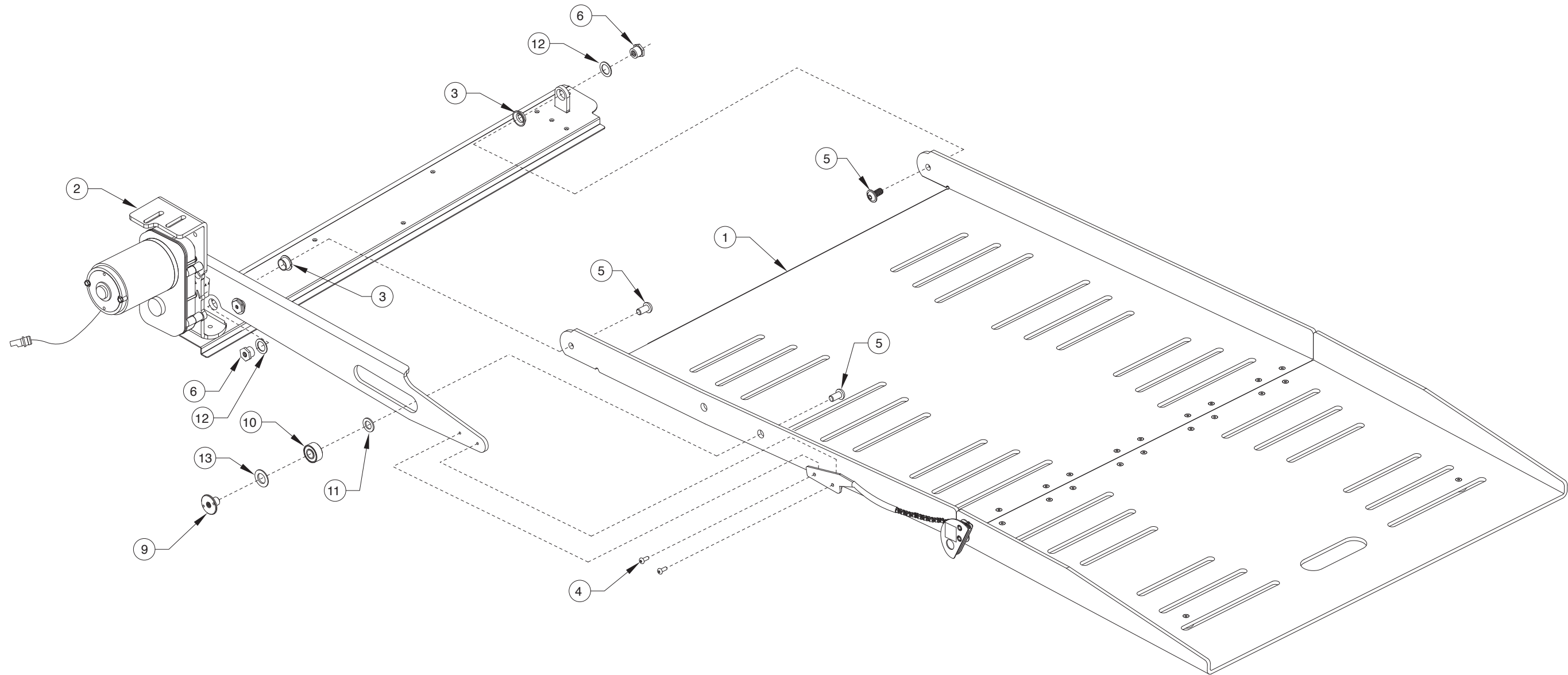
**\*Note:** Diagram includes some late 2005 conversions.



Unfold for:  
Exploded View 2006 &  
2007 Foldout Ramp Gear,  
Motor and Base Assembly

## Exploded View - 2006 & 2007\* Chrysler Conversion (Foldout Ramp) Ramp Assembly

\*Note: Diagram includes some late 2005 conversions.



## REPLACEMENT PARTS

### 2006 & 2007\* Chrysler Conversion (Foldout Ramp) Ramp Assembly

Item	Qty.	Description	Part Number
1	1	RAMP ASSY-BASE & EXT/29.25" AUTO/TOYOTA	E90111DKA2907-1
2	1	ASSY-GEARMOTOR/ARM_BKT/CHRY 2007 R&S	E50889ADK
3	2	BEARING-FLANGE-5/8" X 1/4"-10FDU04	28435
4	2	SCREW-1/4-20 X 3/8" FLBHSCS-	28252
5	3	BOLT-3/8-16 X 3/4" FLBHSCS-GD8	25171
6	2	PIVOT PIN/BUSHING/EV RAMP/2905	52571-2905
7**	1	HARNESS-RAMP EXT./CONTROLLER-OAKTEC	52038A-96A8
8**	0.001	LOCTITE-BLUE/#242 GEN PURPOSE	18822
9	1	RETAINER-BEARING	21451-03
10	1	BEARING-1/2ID X 1 1/8 OD-BALL	21371
11	1	WASHER-.519ID X .876OD X .074	12621
12	2	WASHER-.63 X .8 X .06 NYLON{10	83584
13	1	WASHER-UHMW 1.500 OD X .76 ID X 0.062	29680

\*\* Item not shown

## REPLACEMENT PARTS

### 2006 & 2007\* Chrysler Conversion (Foldout Ramp) Kneel Assembly

Item	Qty.	Description	Part Number
1	1	WMT-BKT-KNEEL ACTUATOR	E50614W
2	1	ACT-D12-21B5-07BRN/EV2003 CARAVAN	E51410-06
3	1	BOLT-1/2-13 X 3" HEX	10041
4	1	PIN-CLEVIS 1/2 X 2 1/4"	10908
5	1	SPACER W/BEARING-KNEEL SYSTEM/EV2001	E50040A
6	1	COTTER-HAIR PIN	12531
7	2	PIN-COTTERED-4/4 LEAF CHAIN	21759
8	2	PIN-COTTER 1/32 X1/2 (4X4)	23173
9	1	RELEASE HANDLE ASSY-KNEEL	E40335A
10	1	EMER. RELEASE ACTUATOR KNEEL SYS.	E50113
11 **	1	KNEEL CABLE	EC42042

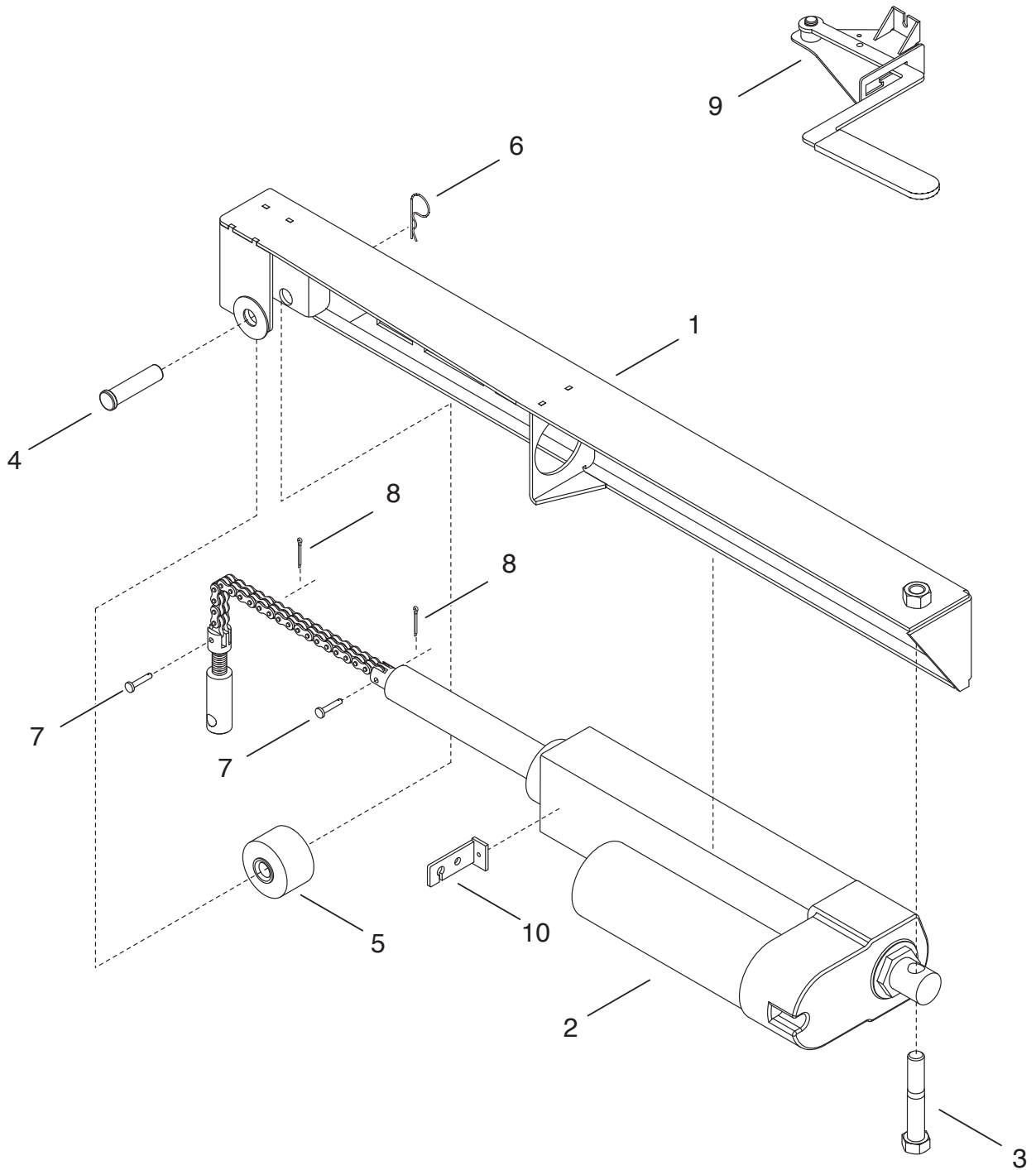
\*\* Item not shown



# REPLACEMENT PARTS

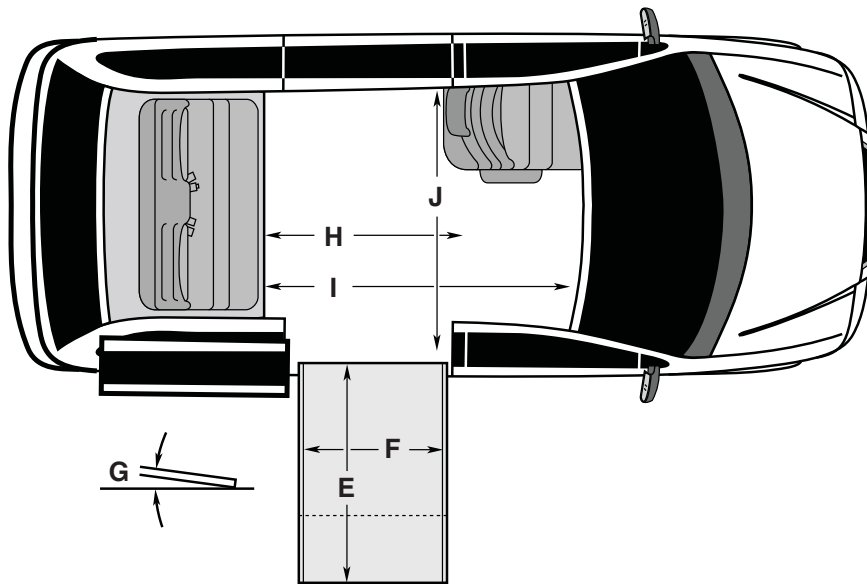
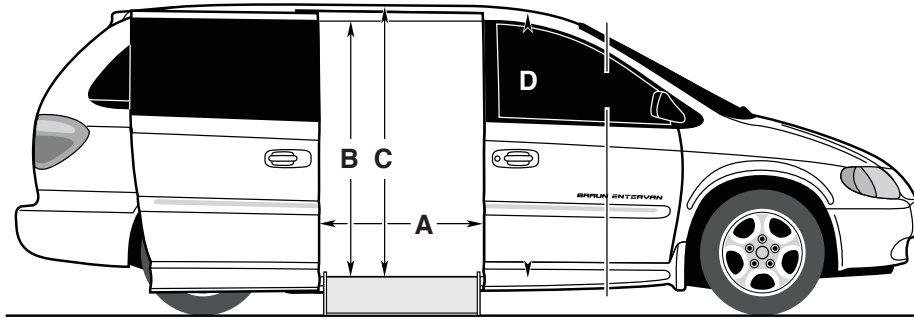
## Exploded View - 2006 & 2007\* Chrysler Conversion (Foldout Ramp) Kneel Assembly

**\*Note:** Diagram includes some late 2005 conversions.



# DIMENSIONS

## Dimensions - 2006 & 2007 Chrysler Conversion (Foldout Ramp)



All dimensions are for reference only.

		<b>Foldout Ramp</b>
Door Opening Usable Width (Slide Door)	<b>A</b>	31-1/4"
Door Opening Usable Height (Slide Door)	<b>B</b>	52-3/4"
Interior Height at Center of Van*	<b>C</b>	57-1/4"
Interior Height at Driver and Passenger Position**	<b>D</b>	56-1/4"
Ramp Length	<b>E</b>	52"
Ramp Width (Useable Clear Opening)	<b>F</b>	29-1/4"
Ramp Angle (with Vehicle Kneeled)	<b>G</b>	9.4°
Interior Floor Length (Behind Front Seats)	<b>H</b>	53-1/2"
Overall Interior Floor Length (Flat Area)	<b>I</b>	82"
Interior Width at B Pillars	<b>J</b>	60-1/4"

Due to manufacturing tolerances both with the OEM vehicle and the conversion components, all dimensions may vary slightly from those shown.

\* Deduct 2-1/2" off of Interior Height for conversions with OEM Overhead DVD/Rail System

\*\* Deduct 2" off of Interior Height for conversions with OEM Moon Roof

**"Providing Access to the World"®**



**Over 300 Braun  
Dealers Worldwide**

 **THE BRAUN  
CORPORATION**  
"Providing Access to the World"



---

International Corporate Hdqrs: P.O. Box 310 Winamac, IN 46996 USA  
1-800-THE LIFT® (574) 946-6153 FAX: (574) 946-4670



*Because Life is a Moving Experience*

34852  
September 2008



International Corporate Hdqrs: P.O. Box 310 Winamac, IN 46996 USA  
1-800-THE LIFT® (574) 946-6153 FAX: (574) 946-4670  
braunmobility.com™ Patent #6,825,628 B2 entervan.com™

All illustrations, descriptions and specifications in this manual are based on the latest product information available at the time of publication. The Braun Corporation reserves the right to make changes at any time without notice.

Braun Lowered Floor Conversions  
2006 & 2007 Chrysler Minivans